

ESSENTIAL  
COLLECTION

by **Giblor's**  
italian worklife specialist



**ROSSINI.**  
Your workwear since 1969

4 ÷ 5 GIBLOR'S STYLE

6 ÷ 7 MAGAZZINO AUTOMATIZZATO  
AUTOMATED WAREHOUSE

8 ÷ 45 **Chef Style**

10 GIACCHE CHEF / CHEF'S JACKETS

28 PANTALONI CHEF / CHEF'S PANTS

36 GREMBIULI CHEF / CHEF'S APRONS

40 ACCESSORI CHEF / CHEF'S ACCESSORIES

44 CALZATURE CHEF / CHEF'S FOOTWEAR

46 ÷ 125 **Ho.Re.Ca. & Service**

46 GREMBIULI / APRONS

92 ACCESSORI / ACCESSORIES

98 COMPLETI / SUITS AND JACKETS

104 GILET / WAISTCOATS

107 PANTALONI / PANTS

108 CAMICIE / SHIRTS AND BLOUSES

112 CAMICI / COATS

116 CASACCHE / TUNICS

126 ÷ 160 **Health&Wellness**

128 CAMICI / APRONS

130 CASACCHE E PANTALONI / TUNICS AND PANTS

162 ÷ 165 TESSUTI, LAVAGGI E CONSIGLI TECNICI  
FABRICS, WASHING SYMBOLS AND TECHNICAL ADVICES

166 INDICE ALFABETICO PRODOTTI  
ALPHABETICAL INDEX OF PRODUCTS

**ESSENTIAL**  
COLLECTION



## chef style

Giacche bottoni a pressione  
Press stud fastening jackets

# AUGUSTIN

### Dettagli / Details

- Abbottonatura nascosta con automatici
- Taschino portapenne sulla manica

- Concealed buttoning with press studs
- Pen pocket on sleeve

### Taglie / Sizes

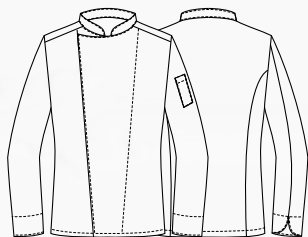
S ÷ 4XL Slim Fit

**COD. Q8G00187**

C01 Bianco / White  
U32 Nero / Black

### Tessuto / Fabric

97% cotone 3% elasthan  
97% cotton 3% elastane  
185 g / m<sup>2</sup>



COMFORT



**COD. Q8G00187**

U32 Nero / Black

**COD. Q8G00187**

C01 Bianco / White

**chef style**

Giacche bottoni a pressione  
Press stud fastening jackets

## CELINE

### Dettagli / Details

- Abbottonatura nascosta con automatici
- Taschino portapenne sulla manica

- Concealed buttoning with press studs
- Pen pocket on sleeve

### Taglie / Sizes

XS ÷ 3XL Slim Fit

**COD. Q8G00188**

U32 Nero / Black  
C01 Bianco / White

### Tessuto / Fabric

97% cotone 3% elasthan  
97% cotton 3% elastane  
185 g / m<sup>2</sup>



**COMFORT**



**COD. Q8G00188**

C01 Bianco / White

**COMFORT**

**COD. Q8G00188**

U32 Nero / Black

## chef style

Giacche bottoni a pressione  
*Press stud fastening jackets*

# PATRIZIO

### Dettagli / Details

- Abbottonatura nascosta con automatici
- Profilo grigio
- Taschino sul petto
- Taschino portapenne sulla manica
- Rete nei fianchetti dietro
- Rete nel sottomanica

- *Concealed buttoning with press studs*
- *Grey piping*
- *Breast pocket*
- *Pen pocket on sleeve*
- *Lateral network fabric panels on the back*
- *Network fabric on the undersleeve*

### Taglie / Sizes

S ÷ 4XL Slim Fit

**COD. Q8G00189**

C01 Bianco / White

### Tessuto / Fabric

100% cotone  
100% cotton  
185 g / m<sup>2</sup>

**COD. Q8G00190**

U35 Bordeaux / Burgundy  
Z48 Blu / Blue  
U32 Nero / Black

### Tessuto / Fabric

65% poliestere 35% cotone  
65% polyester 35% cotton  
200 g / m<sup>2</sup>



COMFORT



**COD. Q8G00190**

U32 Nero / Black



COMFORT



**COD. Q8G00189**

C01 Bianco / White



**COD. Q8G00190**

U35 Bordeaux / Burgundy



COMFORT



**COD. Q8G00190**

Z48 Blu / Blue



**COD. Q8G00190**

U32 Nero / Black



## chef style

Giacche bottoni a pressione  
Press stud fastening jackets

# SUSI

### Dettagli / Details

- Abbottonatura nascosta con automatici
- Profilo grigio
- Taschino sul petto
- Taschino portapenne sulla manica
- Rete nei fianchetti dietro
- Rete nel sottomanica

- *Concealed buttoning with press studs*
- *Grey piping*
- *Breast pocket*
- *Pen pocket on sleeve*
- *Lateral network fabric panels on the back*
- *Network fabric on the undersleeve*

### Taglie / Sizes

XS ÷ 3XL Slim Fit

**COD. Q8G00191**

C01 Bianco / White

### Tessuto / Fabric

100% cotone  
100% cotton  
185 g / m<sup>2</sup>

**COD. Q8G00192**

U35 Bordeaux / Burgundy  
Z48 Blu / Blue  
U32 Nero / Black

### Tessuto / Fabric

65% poliestere 35% cotone  
65% polyester 35% cotton  
200 g / m<sup>2</sup>



COMFORT



**COD. Q8G00191**

C01 Bianco / White



COMFORT



**COD. Q8G00191**

C01 Bianco / White



**COD. Q8G00192**

U35 Bordeaux / Burgundy



COMFORT



**COD. Q8G00192**

Z48 Blu / Blue



**COD. Q8G00192**

U32 Nero / Black



## chef style

Giacche bottoni a pressione  
Press stud fastening jackets

# PATRIZIO

### Dettagli / Details

- Abbottonatura nascosta con automatici
- Profilo tricolore italiano
- Taschino sul petto
- Taschino portapenne sulla manica
- Rete nei fianchetti dietro
- Rete nel sottomanica

- Concealed buttoning with press studs
- Italian flag piping
- Breast pocket
- Pen pocket on sleeve
- Lateral network fabric panels on the back
- Network fabric on the undersleeve

### Taglie / Sizes

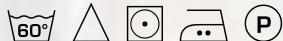
S ÷ 4XL Slim Fit

**COD. Q8G00189**

P50 ITA / ITA

### Tessuto / Fabric

100% cotone  
100% cotton  
185 g / m<sup>2</sup>



COMFORT



**COD. Q8G00189**

P50 ITA / ITA

## chef style

Giacche bottoni a pressione  
Press stud fastening jackets

# SUSI

### Dettagli / Details

- Abbottonatura nascosta con automatici
  - Profilo tricolore italiano
  - Taschino sul petto
  - Taschino portapenne sulla manica
  - Rete nei fianchetti dietro
  - Rete nel sottomanica
- Concealed buttoning with press studs
  - Italian flag piping
  - Breast pocket
  - Pen pocket on sleeve
  - Lateral network fabric panels on the back
  - Network fabric on the undersleeve

### Taglie / Sizes

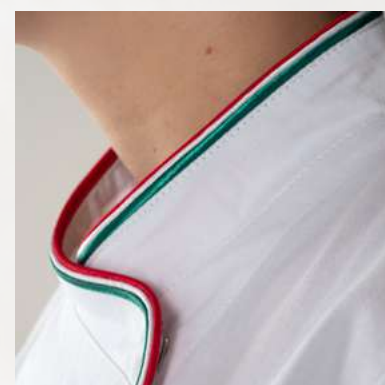
XS ÷ 3XL Slim Fit

**COD. Q8G00191**

P50 ITA / ITA

### Tessuto / Fabric

100% cotone  
100% cotton  
185 g / m<sup>2</sup>



COMFORT

**COD. Q8G00191**

P50 ITA / ITA

## chef style

Giacche bottoni a pressione  
Press stud fastening jackets

# RAUL

### Dettagli / Details

- Abbottonatura nascosta con automatici
- Taschino sul petto
- Taschino portapenne sulla manica
- Rete sulla schiena
- Rete nel sottomanica

- Concealed buttoning with press studs
- Breast pocket
- Pen pocket on sleeve
- Network fabric on the back
- Network fabric on the undersleeve

### Taglie / Sizes

S ÷ 4XL Slim Fit

**COD. Q8GX0104**

Art. 22P08G322  
C01 Bianco / White

### Tessuto / Fabric

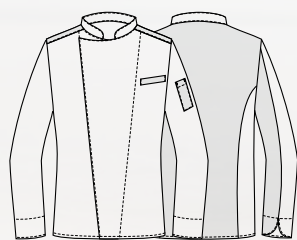
100% cotone  
100% cotton  
185 g / m<sup>2</sup>

**COD. Q8GX0105**

Art. 22P08G323  
C02 Grigio chiaro / Light grey  
Z41 Tortora / Taupe  
Z44 Marrone / Brown  
U35 Bordeaux / Burgundy  
Z43 Verde militare / Military green  
Z48 Blu / Blue  
U32 Nero / Black

### Tessuto / Fabric

65% poliestere 35% cotone  
65% polyester 35% cotton  
200 g / m<sup>2</sup>



COMFORT



**COD. Q8GX0105**

Art. 22P08G323  
Z41 Tortora / Taupe



COMFORT

**COD. Q8GX0104**

Art. 22P08G322  
C01 Bianco / White



COMFORT

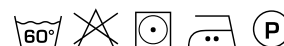
**COD. Q8GX0105**

Art. 22P08G323  
C02 Grigio chiaro / Light grey



**COD. Q8GX0105**

Art. 22P08G323  
Z41 Tortora / Taupe



COMFORT

**COD. Q8GX0105**

Art. 22P08G323  
Z44 Marrone / Brown



**COD. Q8GX0105**

Art. 22P08G323  
U35 Bordeaux / Burgundy



COMFORT

**COD. Q8GX0105**

Art. 22P08G323  
Z43 Verde militare / Military green



COMFORT

**COD. Q8GX0105**

Art. 22P08G323  
Z48 Blu / Blue



**COD. Q8GX0105**

Art. 22P08G323  
U32 Nero / Black



## chef style

Giacche bottoni a pressione  
Press stud fastening jackets

# THIAGO

### Dettagli / Details

- Abbottonatura nascosta con automatici  
- Taschino sul petto - Rete sulla schiena

- Concealed buttoning with press studs  
- Breast pocket - Network fabric on the back

### COD. Q8GX0100

Art. 15P08G641  
C01 Bianco / White

### Taglie / Sizes

S ÷ 5XL Slim Fit

### Tessuto / Fabric

100% cotone  
100% cotton  
185 g / m<sup>2</sup>

### COD. Q8GX0102

Art. 19P08G640  
C02 Grigio chiaro / Light grey

### Taglie / Sizes

S ÷ 4XL Slim Fit

### Tessuto / Fabric

65% poliestere 35% cotone  
65% polyester 35% cotton  
200 g / m<sup>2</sup>

### COD. Q8GX0101

Art. 15P08G640  
U32 Nero / Black

### Taglie / Sizes

S ÷ 5XL Slim Fit

### Tessuto / Fabric

65% poliestere 35% cotone  
65% polyester 35% cotton  
200 g / m<sup>2</sup>

### COD. Q8GX0103

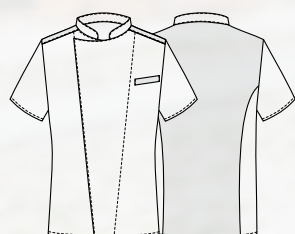
Art. 22P08G640  
Z48 Blu / Blue  
U35 Bordeaux / Burgundy  
Z44 Marrone / Brown  
Z41 Tortora / Taupe  
Z43 Verde militare / Military green

### Taglie / Sizes

S ÷ 4XL Slim Fit

### Tessuto / Fabric

65% poliestere 35% cotone  
65% polyester 35% cotton  
200 g / m<sup>2</sup>



COMFORT



### COD. Q8GX0101

Art. 22P08G640  
U32 Nero / Black



COMFORT

**COD. Q8GX0100**

Art. 15P08G641  
C01 Bianco / White



COMFORT

**COD. Q8GX0102**

Art. 19P08G640  
C02 Grigio chiaro / Light grey



**COD. Q8GX0101**

Art. 15P08G640  
U32 Nero / Black



COMFORT

**COD. Q8GX0103**

Art. 22P08G640  
Z48 Blu / Blue



**COD. Q8GX0103**

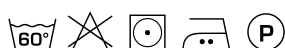
Art. 22P08G640  
U35 Bordeaux / Burgundy



COMFORT

**COD. Q8GX0103**

Art. 22P08G640  
Z44 Marrone / Brown



COMFORT

**COD. Q8GX0103**

Art. 22P08G640  
Z41 Tortora / Taupe



**COD. Q8GX0103**

Art. 22P08G640  
Z43 Verde militare / Military green



## chef style

Giacche bottoni a pressione  
Press stud fastening jackets

# GUIDO

### Dettagli / Details

- Abbottonatura nascosta con automatici
- Profilo grigio scuro
- Taschino portapenne sulla manica
- Rete nei fianchetti davanti
- Rete sulla schiena

- Concealed buttoning with press studs
- Dark grey piping
- Pen pocket on sleeve
- Network fabric on the front sides
- Network fabric on the back

### Taglie / Sizes

S ÷ 4XL Slim Fit

**COD. Q8G00285**

C01 Bianco / White

### Tessuto / Fabric

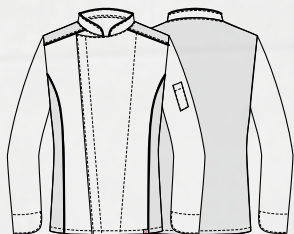
100% cotone  
100% cotton  
185 g / m<sup>2</sup>

**COD. Q8G00672**

U35 Bordeaux / Burgundy  
Z43 Verde militare / Military green  
U32 Nero / Black

### Tessuto / Fabric

65% poliestere 35% cotone  
65% polyester 35% cotton  
200 g / m<sup>2</sup>



COMFORT



**COD. Q8G00285**

C01 Bianco / White



COMFORT

**COD. Q8G00285**

C01 Bianco / White



**COD. Q8G00672**

U35 Bordeaux / Burgundy



COMFORT

**COD. Q8G00672**

Z43 Verde militare / Military green



**COD. Q8G00672**

U32 Nero / Black



## chef style

Giacche bottoni a pressione  
Press stud fastening jackets

# OMAR

### Dettagli / Details

- Abbottonatura nascosta con automatici
- Profilo grigio scuro
- Taschino portapenne sulla manica
- Rete nei fianchetti davanti
- Rete sulla schiena

- *Concealed buttoning with press studs*
- *Dark grey piping*
- *Pen pocket on sleeve*
- *Network fabric on the front sides*
- *Network fabric on the back*

### Taglie / Sizes

S ÷ 4XL Slim Fit

**COD. Q8G00673**

C01 Bianco / White

### Tessuto / Fabric

100% cotone  
100% cotton  
185 g / m<sup>2</sup>

**COD. Q8G00288**

U35 Bordeaux / Burgundy  
Z43 Verde militare / Military green  
U32 Nero / Black

### Tessuto / Fabric

65% poliestere 35% cotone  
65% polyester 35% cotton  
200 g / m<sup>2</sup>



COMFORT



**COD. Q8G00288**

U32 Nero / Black



COMFORT

**COD. Q8G00673**

C01 Bianco / White



**COD. Q8G00288**

U35 Bordeaux / Burgundy



COMFORT

**COD. Q8G00288**

Z43 Verde militare / Military green



**COD. Q8G00288**

U32 Nero / Black



## chef style

Giacche bottoni estraibili  
Removable button jackets

# ADRIANO

### Dettagli / Details

- Abbottonatura con bottoni estraibili
- Taschino portapenne sulla manica

- Buttoning with removable buttons
- Pen pocket on sleeve

### Taglie / Sizes

XS ÷ 5XL Slim Fit

**COD. Q8G00183**

C01 Bianco / White

### Tessuto / Fabric

100% cotone  
100% cotton  
185 g / m<sup>2</sup>

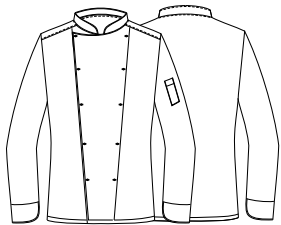


**COD. Q8G00184**

U32 Nero / Black

### Tessuto / Fabric

65% poliestere 35% cotone  
65% polyester 35% cotton  
200 g / m<sup>2</sup>



**COD. Q8G00184**

U32 Nero / Black



**COD. Q8G00183**

C01 Bianco / White

# TOMMASO

## Dettagli / Details

- Abbottonatura con bottoni estraibili
- Taschino portapenne sulla manica

- Buttoning with removable buttons
- Pen pocket on sleeve

## Taglie / Sizes

XS ÷ 5XL Slim Fit

**COD. Q8G00185**

C01 Bianco / White

## Tessuto / Fabric

100% cotone  
100% cotton  
185 g / m<sup>2</sup>

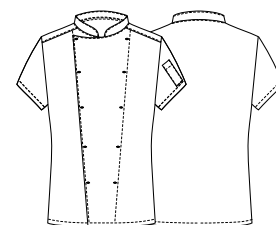


**COD. Q8G00186**

U32 Nero / Black

## Tessuto / Fabric

65% poliestere 35% cotone  
65% polyester 35% cotton  
200 g / m<sup>2</sup>



**COD. Q8G00186**

U32 Nero / Black

**COD. Q8G00185**

C01 Bianco / White

## chef style

Pantaloni  
Pants



**COD. Q8P00193**

C01 Bianco / White



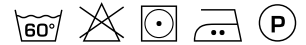
**COD. Q8P00195**

Q32 - Quadro nero / Black checked



**COD. Q8P00194**

U32 Nero / Black



## PLUTONE

### Dettagli / Details

- Elastico e coulisse in vita
- 2 tasche
- 1 tasca sul retro

- Elasticated waistband with drawstring
- 2 pockets
- 1 rear pocket

### Taglie / Sizes

XS ÷ 5XL Slim Fit

**COD. Q8P00193**

C01 Bianco / White

### Tessuto / Fabric

100% cotone  
100% cotton  
185 g / m<sup>2</sup>

**COD. Q8P00195**

Q32 - Quadro nero / Black checked

### Tessuto / Fabric

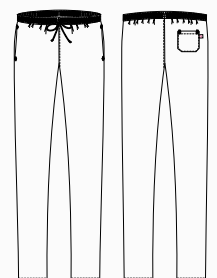
100% cotone  
100% cotton  
200 g / m<sup>2</sup>

**COD. Q8P00194**

U32 Nero / Black

### Tessuto / Fabric

65% poliestere 35% cotone  
65% polyester 35% cotton  
200 g / m<sup>2</sup>





**COD. Q8PX0280**

Art. 23P08P372

Q32 Quadro nero / Black checked



**COD. Q8PX0280**

Art. 23P08P372

G32 Gessato nero / Black pinstriped

## IVAN

### Dettagli / Details

- Elastico e coulisse in vita
- Fascione, bande laterali e polsini in rete
- 2 tasche davanti
- 2 tasche sul retro

- Elasticated waistband with drawstring
- Waistband, side bands and cuffs in mesh
- 2 front pockets
- 2 rear pockets

### Taglie / Sizes

XS ÷ 4XL Slim Fit

**COD. Q8PX0280**

Art. 23P08P372

Q32 Quadro nero / Black checked

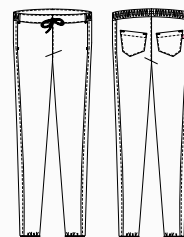
G32 Gessato nero / Black pinstriped

### Tessuto / Fabric

100% cotone

100% cotton

200 g / m<sup>2</sup>



## chef style

Pantaloni  
Pants

# ENRICO

### Dettagli / Details

- Elastico e coulisse in vita
- Chiusura zip
- 2 tasche
- 1 tasca sul retro

- *Elasticated waistband with drawstring*
- *Zip fly*
- *2 pockets*
- *1 rear pocket*

### Taglie / Sizes

XS ÷ 5XL Regular Fit

**COD. Q8PX0108**

Art. 11P08P20

G35 Gessato bordeaux / *Burgundy pinstriped*

G48 Gessato blu / *Blue pinstriped*

G12 Gessato grigio / *Grey pinstriped*

G32 Gessato nero / *Black pinstriped*

### Tessuto / Fabric

70% cotone 30% poliestere

70% cotton 30% polyester

145 g / m<sup>2</sup>



**COD. Q8PX0108**

Art. 11P08P20

G35 Gessato bordeaux / *Burgundy pinstriped*



**COD. Q8PX0108**

Art. 11P08P20

G48 Gessato blu / *Blue pinstriped*



**COD. Q8PX0108**

Art. 11P08P20

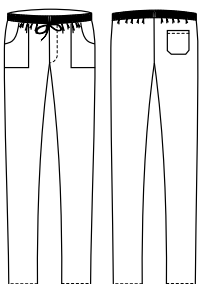
G12 Gessato grigio / *Grey pinstriped*



**COD. Q8PX0108**

Art. 11P08P20

G32 Gessato nero / *Black pinstriped*





**COD. Q8PX0109**

Art. 19P08P20

R12 Rigato grigio / Grey striped



**COD. Q8PX0109**

Art. 19P08P20

R32 Rigato nero / Black striped

## ENRICO

### Dettagli / Details

- Elastico e coulisse in vita
- Chiusura zip
- 2 tasche
- 1 tasca sul retro

- Elasticated waistband with drawstring
- Zip fly
- 2 pockets
- 1 rear pocket

### Taglie / Sizes

XS ÷ 5XL Regular Fit

**COD. Q8PX0109**

Art. 19P08P20

R12 Rigato grigio / Grey striped

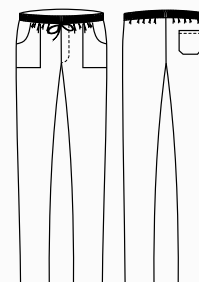
R32 Rigato nero / Black striped

### Tessuto / Fabric

70% cotone 30% poliestere

70% cotton 30% polyester

145 g / m<sup>2</sup>



## chef style

Pantaloni  
Pants

# NOAH

### Dettagli / Details

- Elastico e coulisse in vita
- 2 tasche
- 1 tasca sul retro

- *Elasticated waistband with drawstring*
- *2 pockets*
- *1 rear pocket*

### Taglie / Sizes

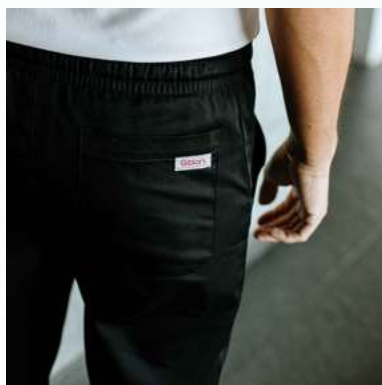
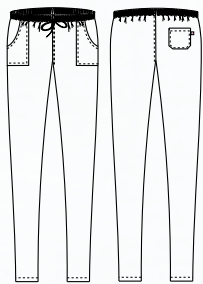
S ÷ 4XL Slim Fit

**COD. Q8PX0110**

Art. 20P08P185  
U32 Nero / Black

### Tessuto / Fabric

62% cotone 35% poliestere 3% elasthan  
62% cotton 35% polyester 3% elastane  
180 g / m<sup>2</sup>



COMFORT

**COD. Q8PX0110**

Art. 20P08P185  
U32 Nero / Black



ULTRA  
LIGHT

**COD. Q8PX011**

Art. 20P08P184  
Z41 Tortora / Taupe



ULTRA  
LIGHT

**COD. Q8PX011**

Art. 20P08P184  
M12 Grigio / Grey

## NOAH

### Dettagli / Details

- Elastico e coulisse in vita
- 2 tasche
- 1 tasca sul retro

- *Elasticated waistband with drawstring*
- *2 pockets*
- *1 rear pocket*

### Taglie / Sizes

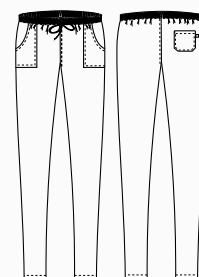
XS ÷ 5XL Regular Fit

**COD. Q8PX011**

Art. 20P08P184  
Z41 Tortora / Taupe  
M12 Grigio / Grey

### Tessuto / Fabric

65% poliestere 35% cotone  
65% polyester 35% cotton  
115 g / m<sup>2</sup>



## chef style

Pantaloni

Pants



**COD. Q8PX0114**

Art. 19P08P109  
J02 Jeans grigio / Grey jeans



**COD. Q8PX0114**

Art. 19P08P109  
J32 Jeans nero / Black jeans



**COD. Q8PX0115**

Art. 20P08P186  
U32 Nero / Black

## GIOVE

### Dettagli / Details

- Elastico in vita tergisudore - Passanti cintura
- Bottone a chiodo - Chiusura zip - 2 tasche
- 2 tasche sul retro - Inserto in rete traspirante

- Elasticated sweatband - Belt loops
- Stud button - Zip fly - 2 pockets
- 2 rear pockets - Network fabric panel

### Taglie / Sizes

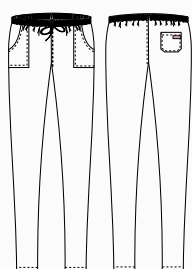
XS ÷ 4XL Slim Fit

**COD. Q8PX0114**

Art. 19P08P109  
J02 Jeans grigio / Grey jeans  
J32 Jeans nero / Black jeans

### Tessuto / Fabric

75% cotone 23% poliestere 2% elasthan  
75% cotton 23% polyester 2% elastane  
210 g / m<sup>2</sup>



## BRUCE

### Dettagli / Details

- Elastico e coulisse in vita
- 2 tasche
- Rete allover

- Elasticated waistband with drawstring
- 2 pockets
- Network fabric allover

### Taglie / Sizes

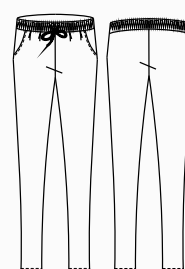
XS ÷ 4XL Slim Fit

**COD. Q8PX0115**

Art. 20P08P186  
U32 Nero / Black

### Tessuto / Fabric

100% poliestere  
100% polyester  
160 g / m<sup>2</sup>





**COD. Q8PX012**

Art. 14P08P477  
F05 Menu nero / Black menu



**COD. Q8PX013**

Art. 10M1532  
F04 Peperoncino / Chili

## ALAN

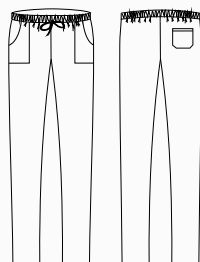
### Dettagli / Details

- Elastico e coulisse in vita
- 2 tasche
- 1 tasca sul retro

- Elasticated waistband with drawstring
- 2 pockets
- 1 rear pocket

### Taglie / Sizes

XS ÷ 4XL Slim Fit



**COD. Q8PX012**

Art. 14P08P477  
F05 Menu nero / Black menu

### Tessuto / Fabric

100% cotone / cotton  
168 g / m<sup>2</sup>



## ATENE

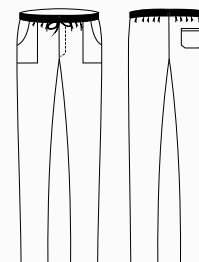
### Dettagli / Details

- Elastico e coulisse in vita
- Chiusura zip
- 2 tasche - 1 tasca sul retro

- Elasticated waistband with drawstring
- Zip fly
- 2 pockets - 1 rear pocket

### Taglie / Sizes

XS ÷ 4XL Regular Fit



**COD. Q8PX013**

Art. 10M1532  
F04 Peperoncino / Chili

### Tessuto / Fabric

100% cotone / cotton  
168 g / m<sup>2</sup>



## chef style

Grembiuli  
Aprons



## PARIGI

### Dettagli / Details

-1 tasca

-1 pocket

### Taglie / Sizes

Taglia unica / One size

### Misure / Dimensions

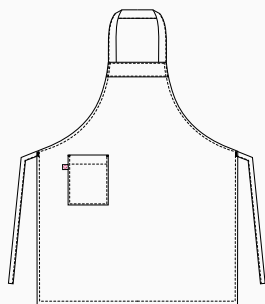
L 74 H 100 cm

**COD. Q8HX0120**

Art. 19P08H478  
F14 Travel / Travel

### Tessuto / Fabric

100% cotone  
100% cotton  
168 g / m<sup>2</sup>



## ZAGABRIA

### Dettagli / Details

-1 tasca

-1 pocket

### Taglie / Sizes

Taglia unica / One size

### Misure / Dimensions

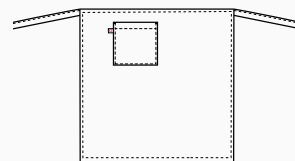
L 70 H 70 cm

**COD. Q8HX0121**

Art. 19P08H480  
F14 Travel / Travel

### Tessuto / Fabric

100% cotone  
100% cotton  
168 g / m<sup>2</sup>





## PARIGI

### Dettagli / Details

- 1 tasca
- 1 pocket

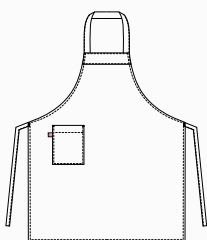
**Taglie / Sizes** Taglia unica / One size  
**Misure / Dimensions** L 74 H 100 cm

**COD. Q8HX0117**

Art. 14P08H478  
 F05 Menu nero / Black menu

### Tessuto / Fabric

100% cotone / 100% cotton - 168 g / m<sup>2</sup>



## ZAGABRIA

### Dettagli / Details

- 1 tasca
- 1 pocket

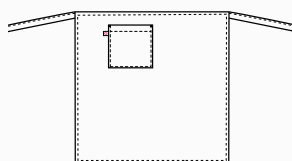
**Taglie / Sizes** Taglia unica / One size  
**Misure / Dimensions** L 70 H 70 cm

**COD. Q8HX0118**

Art. 14P08H480  
 F05 Menu nero / Black menu

### Tessuto / Fabric

100% cotone / 100% cotton - 168 g / m<sup>2</sup>



## LONDON

### Dettagli / Details

- Scamiciato - 1 grande tasca
- Coperto dietro
- Pinafore - 1 big pocket
- Covered backside

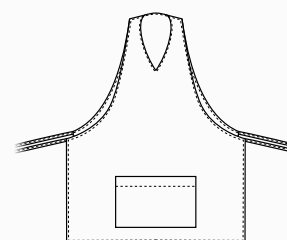
**Taglie / Sizes** Taglia unica / One size  
**Misure / Dimensions** L 83,5 H 63,5 cm

**COD. Q8HX0119**

Art. 14P08H479  
 F05 Menu nero / Black menu

### Tessuto / Fabric

100% cotone / 100% cotton - 168 g / m<sup>2</sup>



ACCESSORI COORDINABILI  
 MATCHING ACCESSORIES  
 pag. 40 - 42

# GIUNONE

**Dettagli / Details**

- Baschina per nascondere il laccio
- Profilo

- *Basque to hide the string*
- *Piping*

**Taglie / Sizes**

Taglia unica / *One size*

**Misure / Dimensions**

L 100 H 90 cm

**COD. Q8H00196**

C01 Bianco / *White*  
P50 ITA / *ITA*

**Tessuto / Fabric**

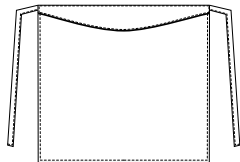
100% cotone  
*100% cotton*  
185 g / m<sup>2</sup>

**COD. Q8H00197**

U35 Bordeaux / *Burgundy*  
Z48 Blu / *Blue*  
U32 Nero / *Black*

**Tessuto / Fabric**

65% poliestere 35% cotone  
*65% polyester 35% cotton*  
200 g / m<sup>2</sup>



**COD. Q8H00196**

C01 Bianco / *White*



**COD. Q8H00196**

P50 ITA / *ITA*



**COD. Q8H00197**

U35 Bordeaux / *Burgundy*



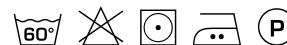
**COD. Q8H00197**

Z48 Blu / *Blue*



**COD. Q8H00197**

U32 Nero / *Black*



## ANCONA

**Dettagli / Details**

- 1 tasca

- 1 pocket

**Taglie / Sizes** Taglia unica / One size

**Misure / Dimensions** L 73 H 100 cm

**COD. Q8H00200**

C01 Bianco / White

**COD. Q8H00201**

U32 Nero / Black



**COD. Q8H00200**

C01 Bianco / White

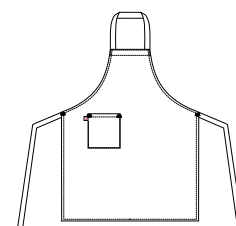
100% cotone  
100% cotton  
185 g / m<sup>2</sup>



**COD. Q8H00201**

U32 Nero / Black

65% poliestere 35% cotone  
65% polyester 35% cotton  
200 g / m<sup>2</sup>



## MATERA

**Dettagli / Details**

- 1 tasca

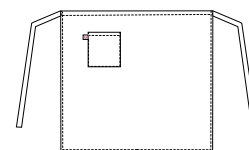
- 1 pocket

**Taglie / Sizes** Taglia unica / One size

**Misure / Dimensions** L 105 H 75 cm

**COD. Q8H00199**

C01 Bianco / White



**COD. Q8H00199**

C01 Bianco / White

100% cotone  
100% cotton  
185 g / m<sup>2</sup>



**COD. Q8H00198**

C01 Bianco / White

100% cotone  
100% cotton  
185 g / m<sup>2</sup>



## BARI

**Dettagli / Details**

- 1 tasca

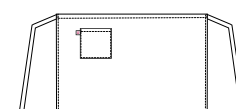
- 1 pocket

**Taglie / Sizes** Taglia unica / One size

**Misure / Dimensions** L 80 H 45 cm

**COD. Q8H00198**

C01 Bianco / White



## accessori

Toque

Toque

# KLIMT

### Dettagli / Details

- Regolabile con elastico
- Adjustable with elastic

### Taglie / Sizes

Taglia unica / One size

**COD. Q5100203**

C01 Bianco / White  
P50 ITA / ITA

### Tessuto / Fabric

100% cotone / cotton  
185 g / m<sup>2</sup>

**COD. Q5100204**

U32 Nero / Black

### Tessuto / Fabric

65% poliestere 35% cotone  
65% polyester 35% cotton  
200 g / m<sup>2</sup>



**COD. Q5100203**

C01 Bianco / White



**COD. Q5100203**

P50 ITA / ITA



COD. Q5100203: venduto in confezioni da 2 pezzi.  
COD. Q5100203: 2 pieces pack.



**COD. Q5100204**

U32 Nero / Black



**COD. Q5100202**

C01 Bianco / White



COD. Q5100204 - Q5100202: venduto in confezioni da 2 pezzi.  
COD. Q5100204 - Q5100202: 2 pieces pack.

# CAPPELLO SCUOLA

### Taglie / Sizes

Taglia unica / One size

**COD. Q5100202**

C01 Bianco / White

### Tessuto / Fabric

100% cotone / cotton  
185 g / m<sup>2</sup>



**COD. Q51X0217**

Art. 10M416  
F04 Peperoncino / Chili



**COD. Q51X0122**

Art. 14P05I483  
F05 Menu nero / Black menu



**COD. Q5100205**

C01 Bianco / White



**COD. Q5100206**

U32 Nero / Black



# TOQUE

### Taglie / Sizes

Taglia unica / One size

**COD. Q51X0217**

Art. 10M416

**COD. Q51X0122**

Art. 14P05I483

### Tessuto / Fabric

100% cotone / cotton  
168 g / m<sup>2</sup>

# MONET

### Taglie / Sizes

Taglia unica / One size

**COD. Q5100205**

C01 Bianco / White

### Tessuto / Fabric

100% cotone / cotton  
185 g / m<sup>2</sup>

**COD. Q5100206**

U32 Nero / Black

### Tessuto / Fabric

65% poliestere 35% cotone  
65% polyester 35% cotton  
200 g / m<sup>2</sup>

## COPRICAPO

**Taglie / Sizes**  
Taglia unica / One size



**COD. R051**

C01 Bianco / White



**COD. R001**

C01 Bianco / White



**COD. R051**

C01 Bianco / White

**Tessuto 1 / Fabric 1**  
100% cotone / cotton

**Tessuto 2 / Fabric 2**  
Rete 100% poliestere  
Network fabric 100% polyester

**COD. R001**

C01 Bianco / White

**Tessuto 1 / Fabric 1**  
100% cotone / cotton

**Tessuto 2 / Fabric 2**  
Rete 100% poliestere  
Network fabric 100% polyester



**COD. R100**



**COD. R100**



**COD. R100**

COD. R100: venduto in confezioni da 6 pezzi. Articolo aleatorio: non è possibile scegliere l'assortimento colore.  
COD. R100: 6 pieces pack. Random color: the choice of the color is not allowed.



## TORCIONE

**Dettagli / Details**  
- Tassello in tessuto per appenderlo  
- Fabric gusset for hanging

**Misure / Dimensions**  
56X80 cm

**COD. R100**

Colori assortiti / Assorted colors

**Tessuto / Fabric**  
100% cotone / cotton

## ANDY TRIANGOLO CUOCO

**COD. Q5100265**

C01 Bianco / White

**Larghezza / Width**  
95 cm

**Tessuto / Fabric**  
100% cotone / cotton  
185 g / m<sup>2</sup>

**COD. Q5100266**

U32 Nero / Black

**Larghezza / Width**  
95 cm

**Tessuto / Fabric**  
65% poliestere 35% cotone  
65% polyester 35% cotton  
200 g / m<sup>2</sup>



**COD. Q5100265**

C01 Bianco / White



COD. Q5100265: venduto in confezioni da 4 pezzi.  
COD. Q5100265: 4 pieces pack.



**COD. Q5100266**

U32 Nero / Black



COD. Q5100266: venduto in confezioni da 2 pezzi.  
COD. Q5100266: 2 pieces pack.

**COD. R140**

Bianco / White

**Larghezza / Width**  
90 cm

**Tessuto / Fabric**  
100% cotone / cotton  
140 g / m<sup>2</sup>



**COD. R140**

Bianco / White



## accessori

Bandana  
Bandanas

# BANDANA MARTE CON TERGISUDORE

### Taglie / Sizes

Taglia unica / One size

**COD. Q5IX0126**

Art. 19P051865  
U35 Bordeaux / Burgundy

**COD. Q5IX0125**

Art. 22P051865  
Z48 Blu / Blue  
Z44 Marrone / Brown

**COD. Q5IX0124**

Art. 20P051865  
Z41 Tortora / Toupe  
Z43 Verde militare / Military green

**COD. Q5IX0123**

Art. 17P051865  
C02 Grigio chiaro / Light grey

### Tessuto / Fabric

65% poliestere 35% cotone  
65% polyester 35% cotton  
200 g / m<sup>2</sup>

**COD. Q5IX0128**

Art. 10M443  
F04 Peperoncino / Chili

**COD. Q5IX0127**

Art. 14P051481  
F05 Menu nero / Black menu

### Tessuto / Fabric

100% cotone  
100% cotton  
168 g / m<sup>2</sup>

# BANDANA GIOVE

### Taglie / Sizes

Taglia unica / One size

**COD. Q5100263**

C01 Bianco / White  
U32 Nero / Black

### Tessuto / Fabric

65% poliestere 35% cotone  
65% polyester 35% cotton  
143 g / m<sup>2</sup>



**COD. Q5IX0126**

Art. 19P051865  
U35 Bordeaux / Burgundy



**COD. Q5IX0125**

Art. 22P051865  
Z48 Blu / Blue



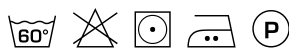
**COD. Q5IX0125**

Art. 22P051865  
Z44 Marrone / Brown



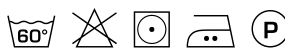
**COD. Q5IX0124**

Art. 20P051865  
Z41 Tortora / Taupe



**COD. Q5IX0124**

Art. 20P051865  
Z43 Verde militare / Military green



**COD. Q5IX0123**

Art. 17P051865  
C02 Grigio chiaro / Light grey



**COD. Q5IX0128**

Art. 10M443  
F04 Peperoncino / Chili



**COD. Q5IX0127**

Art. 14P051481  
F05 Menu nero / Black menu



**COD. Q5100263**

C01 Bianco / White



**COD. Q5100263**

U32 Nero / Black



CON FASCIA TERGISUDORE  
WITH SWEAT BAND



**COD. Q5IX0123**

Art. 17P051865  
C02 Grigio chiaro / Light grey

## STELVIO CALZATURA ALIMENTARE

### Tomaia / Upper

- Microfibra idrorepellente
- Puntale in composito

- *Water repellent microfiber*
- *Composite toe cap*

**COD. SSVL114**

WHITE

**COD. SSVL115**

BLACK

### Taglie / Sizes

35 ÷ 48

**CE** Certificazione CE / CE Certification  
EN 20345 S2 SR FO

METAL FREE



rossiniTECH.

## MINORCA SABOT

### Tomaia / Upper

- Fibertex
- Puntale in composito

- *Fibertex*
- *Composite toe cap*

**COD. SSEX115**

### Taglie / Sizes

35 ÷ 48

**CE** Certificazione CE / CE Certification  
EN20345 SB SR FO



rossiniTECH.

## LANZAROTE SABOT

### Tomaia / Upper

- Fibertex
- Puntale in composito

- *Fibertex*
- *Composite toe cap*

**COD. SSEX116**

### Taglie / Sizes

35 ÷ 48

**CE** Certificazione CE / CE Certification  
EN 20345 SB SR FO



rossiniTECH.



## ZOCCOLO DONNA / UOMO

### Tomaia / Upper

- Pelle traforata traspirante  
- Breathable perforated leather

**COD. SSZ0005**

(DONNA/WOMAN)

Taglie / Sizes

35 ÷ 41



**COD. SSZ0006**

(UOMO/MAN)

Taglie / Sizes

41 ÷ 46

**CE** Certificazione CE / CE Certification  
EN 20347 E A FO SRA



## ZOCCOLO CON LACCETTO DONNA / UOMO

### Tomaia / Upper

- Pelle traforata traspirante  
- Breathable perforated leather

**COD. SSZ0007**

(DONNA/WOMAN)

Taglie / Sizes

35 ÷ 41



**COD. SSZ0008**

(UOMO/MAN)

Taglie / Sizes

41 ÷ 46

**CE** Certificazione CE / CE Certification  
EN 20347 E A FO SRA



Grembiule **LIONE**

**COD. Q1HX0131**

Art. 20P01H159  
pag. 51

Grembiule **SCOTLAND**

**COD. Q1HX0132**

Art. 20P01H2055  
pag. 49

# RENO

## Dettagli / Details

- Allacciatura collo regolabile con bottoni
- 1 taschino portapenne
- 2 tasche

- Adjustable halter with buttons
- 1 pen pocket
- 2 pockets

## Taglie / Sizes

Taglia unica / One size

## Misure / Dimensions

L 78 H 85 cm

**COD. Q1HX0272**

Art. 23P01H158  
U35 Bordeaux / Burgundy

**COD. Q1HX0130**

Art. 20P01H158  
C02 Grigio chiaro / Light grey  
Z44 Marrone / Brown  
D21 Beige / Beige

## Tessuto / Fabric

100% poliestere  
100% polyester  
170 g / m<sup>2</sup>



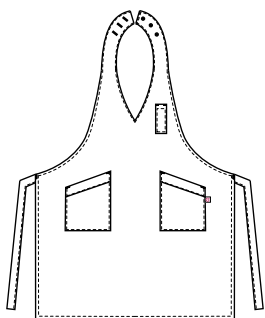
**COD. Q1HX0272**

Art. 23P01H158  
U35 Bordeaux / Burgundy



**COD. Q1HX0130**

Art. 20P01H158  
C02 Grigio chiaro / Light grey



**COD. Q1HX0130**

Art. 20P01H158  
Z44 Marrone / Brown



**COD. Q1HX0130**

Art. 20P01H158  
D21 Beige / Beige

ACCESSORI COORDINABILI  
MATCHING ACCESSORIES  
pag. 97

# SCOTLAND

## Dettagli / Details

- Allacciatura collo regolabile con bottoni
- 1 taschino portapenne
- 1 grande tasca
- Adjustable halter with buttons
- 1 pen pocket
- 1 big pocket

## Taglie / Sizes

Taglia unica / One size

## Misure / Dimensions

L 75 H 64 cm



**COD. Q1HX0274**

Art. 23P01H2055  
U35 Bordeaux / Burgundy



**COD. Q1HX0132**

Art. 20P01H2055  
C02 Grigio chiaro / Light grey

**COD. Q1HX0274**

Art. 23P01H2055  
U35 Bordeaux / Burgundy

**COD. Q1HX0132**

Art. 20P01H2055  
C02 Grigio chiaro / Light grey  
Z44 Marrone / Brown  
D21 Beige / Beige

## Tessuto / Fabric

100% poliestere  
100% polyester  
170 g / m<sup>2</sup>



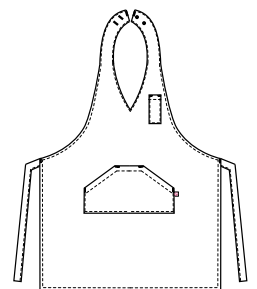
**COD. Q1HX0132**

Art. 20P01H2055  
Z44 Marrone / Brown



**COD. Q1HX0132**

Art. 20P01H2055  
D21 Beige / Beige



**ACCESSORI COORDINABILI**  
**MATCHING ACCESSORIES**  
pag. 97

# NAPOLI

## Dettagli / Details

- 1 tasca

- 1 pocket

## Taglie / Sizes

Taglia unica / One size

## Misure / Dimensions

L 70 H 43 cm

**COD. Q1HX0275**

Art. 23P01H147  
U35 Bordeaux / Burgundy

**COD. Q1HX0129**

Art. 20P01H147  
C02 Grigio chiaro / Light grey  
Z44 Marrone / Brown  
D21 Beige / Beige

## Tessuto / Fabric

100% poliestere  
100% polyester  
170 g / m<sup>2</sup>



**COD. Q1HX0275**

Art. 23P01H147  
U35 Bordeaux / Burgundy



**COD. Q1HX0129**

Art. 20P01H147  
C02 Grigio chiaro / Light grey



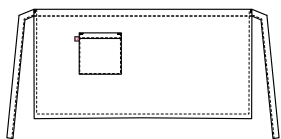
**COD. Q1HX0129**

Art. 20P01H147  
Z44 Marrone / Brown



**COD. Q1HX0129**

Art. 20P01H147  
D21 Beige / Beige



**ACCESSORI COORDINABILI  
MATCHING ACCESSORIES**  
pag. 97

# LIONE

**Dettagli / Details**  
- 1 tasca

- 1 pocket

**Taglie / Sizes**  
Taglia unica / One size

**Misure / Dimensions**  
L 98 H 70 cm



**COD. Q1HX0273**

Art. 23P01H159  
U35 Bordeaux / Burgundy



**COD. Q1HX0131**

Art. 20P01H159  
C02 Grigio chiaro / Light grey

**COD. Q1HX0273**

Art. 23P01H159  
U35 Bordeaux / Burgundy

**COD. Q1HX0131**

Art. 20P01H159  
C02 Grigio chiaro / Light grey  
Z44 Marrone / Brown  
073 Beige / Beige

**Tessuto / Fabric**  
100% poliestere  
100% polyester  
170 g / m<sup>2</sup>



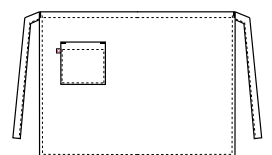
**COD. Q1HX0131**

Art. 20P01H159  
Z44 Marrone / Brown



**COD. Q1HX0131**

Art. 20P01H159  
D21 Beige / Beige



**ACCESSORI COORDINABILI**  
**MATCHING ACCESSORIES**  
pag. 97



Grembiule **SENNA**

**COD. Q1HX0135**

Art. 20P01H153  
pag. 55



Grembiule **RODANO**

**COD. Q1HX0136**

Art. 20P01H154  
pag. 53



**COD. Q1HX0133**

Art. 20P01H423  
G12 Gessato grigio  
G12 Grey pinstriped



**COD. Q1HX0133**

Art. 20P01H423  
G35 Gessato bordeaux  
G35 Burgundy pinstriped



**COD. Q1HX0133**

Art. 20P01H423  
G32 Gessato nero  
G32 Black pinstriped



**COD. Q1HX0136**

Art. 20P01H154  
G12 Gessato grigio  
G12 Grey pinstriped



**COD. Q1HX0136**

Art. 20P01H154  
G35 Gessato bordeaux  
G35 Burgundy pinstriped



**COD. Q1HX0136**

Art. 20P01H154  
G32 Gessato nero  
G32 Black pinstriped

## NAPOLI

### Dettagli / Details

- 1 tasca

- 1 pocket

### Taglie / Sizes

Taglia unica / One size

### Misure / Dimensions

L 70 H 43 cm

**COD. Q1HX0133**

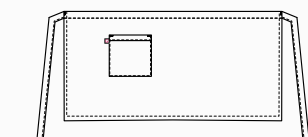
Art. 20P01H423  
G12 Gessato grigio  
G12 Grey pinstriped

G35 Gessato bordeaux  
G35 Burgundy pinstriped

G32 Gessato nero  
G32 Black pinstriped

### Tessuto / Fabric

99% poliestere 1% viscosa  
99% polyester 1% viscose  
170 g / m<sup>2</sup>



## RODANO

### Dettagli / Details

- 1 tasca

- 1 pocket

### Taglie / Sizes

Taglia unica / One size

### Misure / Dimensions

L 70 H 98 cm

**COD. Q1HX0136**

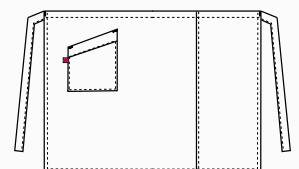
Art. 20P01H154  
G12 Gessato grigio  
G12 Grey pinstriped

G35 Gessato bordeaux  
G35 Burgundy pinstriped

G32 Gessato nero  
G32 Black pinstriped

### Tessuto / Fabric

99% poliestere 1% viscosa  
99% polyester 1% viscose  
170 g / m<sup>2</sup>





**COD. Q1HX0134**

Art. 20P01H152  
G12 Gessato grigio  
G12 Grey pinstriped



**COD. Q1HX0134**

Art. 20P01H152  
G35 Gessato bordeaux  
G35 Burgundy pinstriped



**COD. Q1HX0134**

Art. 20P01H152  
G32 Gessato nero  
G32 Black pinstriped

## RENO

### Dettagli / Details

- Allacciatura collo regolabile con bottoni
- 1 taschino portapenne
- 2 tasche

- Adjustable halter with buttons
- 1 pen pocket
- 2 pockets

### Taglie / Sizes

Taglia unica / One size

### Misure / Dimensions

L 78 H 85 cm

**COD. Q1HX0134**

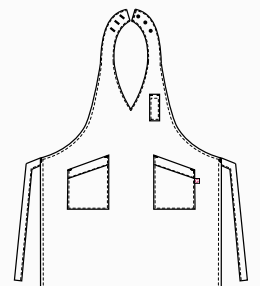
Art. 20P01H152  
G12 Gessato grigio  
G12 Grey pinstriped

G35 Gessato bordeaux  
G35 Burgundy pinstriped

G32 Gessato nero  
G32 Black pinstriped

### Tessuto / Fabric

99% poliestere 1% viscosa  
99% polyester 1% viscose  
170 g / m<sup>2</sup>





**COD. Q1HX0135**

Art. 20P01H153  
G12 Gessato grigio  
G12 Grey pinstriped

**COD. Q1HX0135**

Art. 20P01H153  
G35 Gessato bordeaux  
G35 Burgundy pinstriped

**COD. Q1HX0135**

Art. 20P01H153  
G32 Gessato nero  
G32 Black pinstriped

## SENNA

### Dettagli / Details

- Allacciatura collo regolabile con bottoni
- 2 tasche

- Adjustable halter with buttons
- 2 pockets

### Taglie / Sizes

Taglia unica / One size

### Misure / Dimensions

L 75 H 67,5 cm

**COD. Q1HX0135**

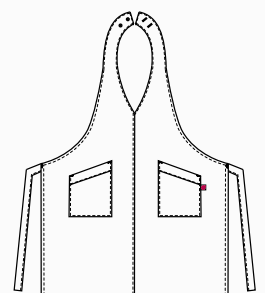
Art. 20P01H153  
G12 Gessato grigio  
G12 Grey pinstriped

G35 Gessato bordeaux  
G35 Burgundy pinstriped

G32 Gessato nero  
G32 Black pinstriped

### Tessuto / Fabric

99% poliestere 1% viscosa  
99% polyester 1% viscose  
170 g / m<sup>2</sup>



# TROPEZ

## Dettagli / Details

- Allacciatura collo regolabile con fibbia
- 1 taschino portapenne
- 2 tasche
- Inserti in alcantara

- Adjustable halter with buckle
- 1 pen pocket
- 2 pockets
- Alcantara inserts

## Taglie / Sizes

Taglia unica / One size

## Misure / Dimensions

L 77,5 H 97 cm

**COD. Q1HX0276**

Art. 23P01H149

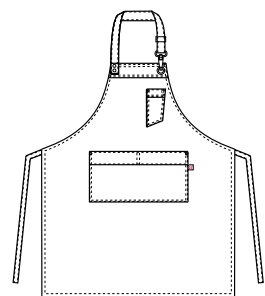
U35 Bordeaux / Burgundy

## Tessuto / Fabric

100% poliestere

100% polyester

170 g / m<sup>2</sup>



**COD. Q1HX0276**

Art. 23P01H149  
U35 Bordeaux / Burgundy



**COD. Q1HX0276**

Art. 23P01H149  
U35 Bordeaux / Burgundy



## MANCHESTER

### Dettagli / Details

- Allacciatura collo regolabile con vela
- 1 taschino portapenne - 3 tasche
- Anello porta torcione - Inserti in alcantara

- Adjustable halter with ring
- 1 pen pocket - 3 pockets
- Cloth ring - Alcantara inserts

### Taglie / Sizes

Taglia unica / One size

### Misure / Dimensions

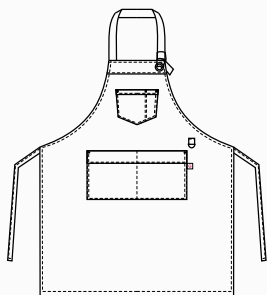
L 80 H 100 cm

**COD. Q1HX0137**

Art. 18P01H019  
U32 Nero / Black

### Tessuto / Fabric

65% poliestere 35% cotone  
65% polyester 35% cotton  
200 g / m<sup>2</sup>



## LUNA

### Dettagli / Details

- Allacciatura collo regolabile con velcro
- 1 taschino portapenne
- 2 tasche - Inserti in alcantara

- Adjustable halter with velcro
- 1 pen pocket
- 2 pockets - Alcantara inserts

### Taglie / Sizes

Taglia unica / One size

### Misure / Dimensions

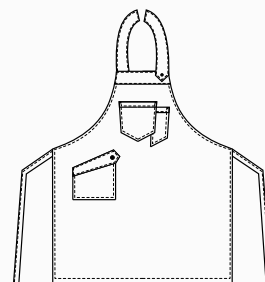
L 83,5 H 67,5 cm

**COD. Q1HX0138**

Art. 18P01H020  
U32 Nero / Black

### Tessuto / Fabric

65% poliestere 35% cotone  
65% polyester 35% cotton  
200 g / m<sup>2</sup>





## DOUGLAS

### Dettagli / Details

- Allacciatura collo regolabile con fibbia
- 4 taschini portapenne - 1 tasca

- Adjustable halter with buckle
- 4 pen pockets - 1 pocket

### Taglie / Sizes

Taglia unica / One size

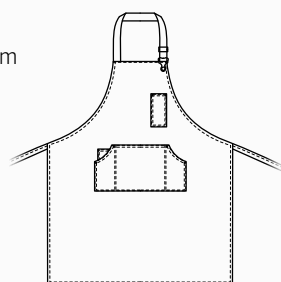
Misure / Dimensions L 80 H 100 cm

**COD. Q1HX0141**

Art. 18P01H013  
J48 Jeans blu / Blue jeans

### Tessuto / Fabric

100% cotone  
100% cotton  
260 g / m<sup>2</sup>



## SHANNON

### Dettagli / Details

- 3 taschini portapenne
- 1 tasca

- 3 pen pockets
- 1 pocket

### Taglie / Sizes

Taglia unica / One size

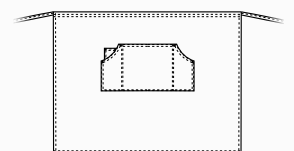
Misure / Dimensions L 80 H 70 cm

**COD. Q1HX0142**

Art. 18P01H014  
J48 Jeans blu / Blue jeans

### Tessuto / Fabric

100% cotone  
100% cotton  
260 g / m<sup>2</sup>



# CALIFORNIA

## Dettagli / Details

- Allacciatura collo regolabile con fibbia
- Laccio collo removibile
- 2 taschini portapenne - 2 tasche

- Adjustable halter with buckle
- Removable necklace
- 2 pen pockets - 2 pockets

## Taglie / Sizes

Taglia unica / One size

## Misure / Dimensions

L 80 H 84,5 cm

**COD. Q1HX0139**

Art. 19P01H072

J48 Jeans blu / Blue jeans

## Tessuto 1 / Fabric 1

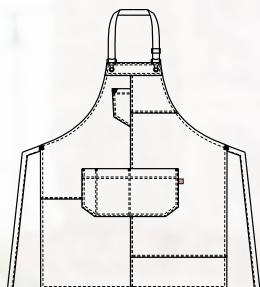
100% cotone  
100% cotton  
260 g / m<sup>2</sup>

## Tessuto 2 / Fabric 2

100% poliestere  
100% polyester  
160 g / m<sup>2</sup>

## Tessuto 3 / Fabric 3

92% poliestere 8% elastan  
92% polyester 8% elastane  
247 g / m<sup>2</sup>



ACCESSORI COORDINABILI  
MATCHING ACCESSORIES  
pag. 97

**COD. Q1HX0139**

Art. 19P01H072  
J48 Jeans blu / Blue jeans

# KANSAS

## Dettagli / Details

- Allacciatura collo regolabile con fibbia
- Laccio collo removibile
- 2 tasche

- Adjustable halter with buckle
- Removable neckline
- 2 pockets

## Taglie / Sizes

Taglia unica / One size

## Misure / Dimensions

L 80 H 64 cm

**COD. Q1HX0140**

Art. 19P01H073

J48 Jeans blu / Blue jeans

## Tessuto 1 / Fabric 1

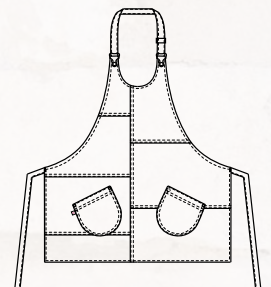
100% cotone  
100% cotton  
260 g / m<sup>2</sup>

## Tessuto 2 / Fabric 2

100% poliestere  
100% polyester  
160 g / m<sup>2</sup>

## Tessuto 3 / Fabric 3

92% poliestere 8% elasthan  
92% polyester 8% elastane  
247 g / m<sup>2</sup>



**COD. Q1HX0140**

Art. 19P01H073

J48 Jeans blu / Blue jeans

ACCESSORI COORDINABILI  
MATCHING ACCESSORIES  
pag. 97

# NIZZA

## Dettagli / Details

- Allacciatura collo regolabile
- 1 taschino portapenne
- 2 tasche
- Anello porta torcione

## - Adjustable halter

- 1 pen pocket
- 2 pockets
- Cloth ring

## Taglie / Sizes

Taglia unica / One size

## Misure / Dimensions

L 77,5 H 97 cm

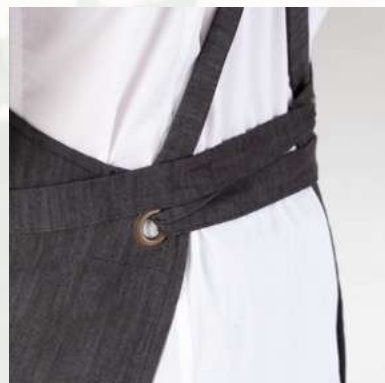
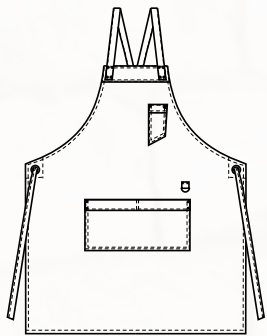
**COD. Q1HX0143**

Art. 19P01H071

J32 Jeans nero / Black jeans

## Tessuto / Fabric

75% cotone 23% poliestere 2% elasthan  
75% cotton 23% polyester 2% elastane  
210 g / m<sup>2</sup>



COMFORT

**COD. Q1HX0143**

Art. 19P01H071

J32 Jeans nero / Black jeans

# LUNA

## Dettagli / Details

- Allacciatura collo regolabile con velcro
- 2 tasche

- Adjustable halter with velcro
- 2 pockets

## Taglie / Sizes

Taglia unica / One size

## Misure / Dimensions

L 83,5 H 67,5 cm

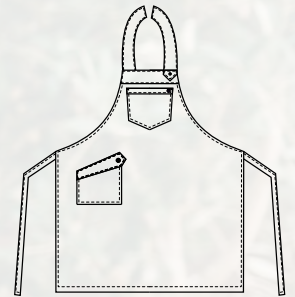
**COD. Q1HX0144**

Art. 19P01H069

J32 Jeans nero / Black jeans

## Tessuto / Fabric

75% cotone 23% poliestere 2% elasthan  
75% cotton 23% polyester 2% elastane  
210 g / m<sup>2</sup>



COMFORT



**COD. Q1HX0144**

Art. 19P01H069

J32 Jeans nero / Black jeans



**Giblor's**  
italian worklife specialist



**COD. Q1H00284**

U35 Bordeaux / Burgundy



## KARPATHOS

### Dettagli / Details

- Allacciatura collo regolabile con vela
- 1 tasca
- Anello porta torcione
- Inserti in alcantara

- Adjustable halter with eyelet
- 1 pocket
- Cloth ring
- Alcantara inserts

### Taglie / Sizes

Taglia unica / One size

### Misure / Dimensions

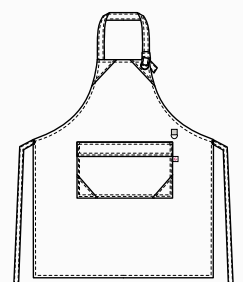
L 80 H 100 cm

**COD. Q1H00284**

Z43 Verde militare / *Military green*  
U35 Bordeaux / *Burgundy*  
U32 Nero / *Black*

### Tessuto / Fabric

65% poliestere 35% cotone  
65% *polyestere* 35% *cotton*  
200 g / m<sup>2</sup>



**ACCESSORI COORDINABILI**  
**MATCHING ACCESSORIES**  
pag. 42



## ho.re.ca. & services

Grembiuli

Aprons

# MYKONOS

### Dettagli / Details

- Allacciatura collo regolabile
- 1 tasca

- Adjustable halter
- 1 pocket

### Taglie / Sizes

Taglia unica / One size

### Misure / Dimensions

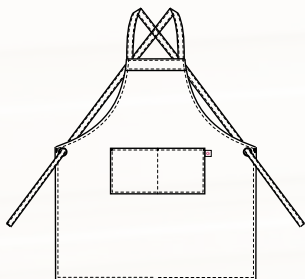
L 80 H 90 cm

**COD. Q1H00675**

C01 Bianco / White  
C02 Grigio chiaro / Light grey  
Z41 Tortora / Taupe  
U35 Bordeaux / Burgundy  
Z43 Verde militare / Military green  
Z48 Blu / Blue  
U32 Nero / Black

### Tessuto / Fabric

65% poliestere 35% cotone  
65% polyester 35% cotton  
200 g / m<sup>2</sup>



ACCESSORI COORDINABILI  
MATCHING ACCESSORIES  
pag. 42

**COD. Q1H00675**

Z43 Verde militare / Military green



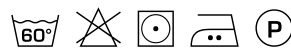
**COD. Q1H00675**

C01 Bianco / White



**COD. Q1H00675**

C02 Grigio chiaro / Light grey



**COD. Q1H00675**

Z41 Tortora / Taupe



**COD. Q1H00675**

U35 Bordeaux / Burgundy



**COD. Q1H00675**

Z43 Verde militare / Military green



**COD. Q1H00675**

Z48 Blu / Blue



**COD. Q1H00675**

U32 Nero / Black



## LEVANTE

### Dettagli / Details

- Allacciatura collo regolabile con bottoni automatici
- 2 tasche
- Coperto dietro
- Adjustable halter with press studs
- 2 pockets
- Covered backside

### Taglie / Sizes

Taglia unica / One size

### Misure / Dimensions

L 83,5 H 83,5 cm

**COD. Q2H00674**

U35 Bordeaux / Burgundy  
D25 Rosso / Red  
D24 Arancio / Orange  
Z46 Fucsia / Fuchsia  
D28 Turchese / Turquoise  
Z48 Blu / Blue  
U32 Nero / Black

### Tessuto / Fabric

100% poliestere  
100% polyester  
220 g / m<sup>2</sup>



**COD. Q2H00674**

U35 Bordeaux / Burgundy

ACCESSORI COORDINABILI  
MATCHING ACCESSORIES  
pag. 92 - 93



**COD. Q2H00674**

U35 Bordeaux / Burgundy



**COD. Q2H00674**

D25 Rosso / Red



**COD. Q2H00674**

D24 Arancio / Orange



**COD. Q2H00674**

Z46 Fucsia / Fuchsia



**COD. Q2H00674**

D28 Turchese / Turquoise



**COD. Q2H00674**

Z48 Blu / Blue



**COD. Q2H00674**

U32 Nero / Black

# DOUGLAS

## Dettagli / Details

- Allacciatura collo regolabile con fibbia
- 4 taschini portapenne
- 1 tasca

- Adjustable halter with buckle
- 4 pen pockets
- 1 pocket

## Taglie / Sizes

Taglia unica / One size

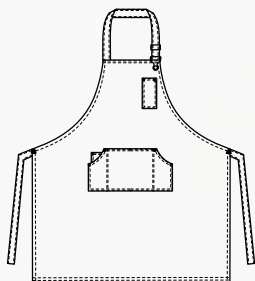
**COD. Q1HX0279**

Art. 23P01H374

S18 Scozzese azzurro / Scottish blue

## Tessuto / Fabric

98% cotone 2% elastan  
98% cotton 2% elastane  
200 g / m<sup>2</sup>



**COD. Q1HX0279**

Art. 23P01H374  
S18 Scozzese azzurro / Scottish blue

ACCESSORI COORDINABILI  
MATCHING ACCESSORIES  
pag. 97

## DOUGLAS

### Dettagli / Details

- Allacciatura collo regolabile con fibbia
- 4 taschini portapenne
- 1 tasca

- Adjustable halter with buckle
- 4 pen pockets
- 1 pocket

### Taglie / Sizes

Taglia unica / One size

**COD. Q1HX0279**

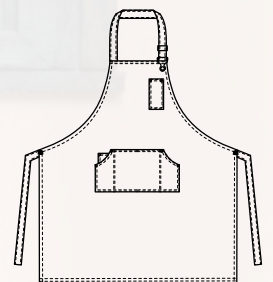
Art. 23P01H374  
S44 Scozzese marrone / Scottish brown

**COD. Q1HX0278**

Art. 23P01H371  
Z41 Tortora / Taupe

### Tessuto / Fabric

98% cotone 2% elasthan  
98% cotton 2% elastane  
200 g / m<sup>2</sup>



COMFORT



**COD. Q1HX0279**

Art. 23P01H374  
S44 Scozzese marrone / Scottish brown

ACCESSORI COORDINABILI  
MATCHING ACCESSORIES  
pag. 97

COMFORT



**COD. Q1HX0278**

Art. 23P01H371  
Z41 Tortora / Taupe

# VIRGINIA

## Dettagli / Details

- Allacciatura collo regolabile con fibbia
- 2 tasche

- Adjustable halter with buckle
- 2 pockets

## Taglie / Sizes

Taglia unica / One size

## Misure / Dimensions

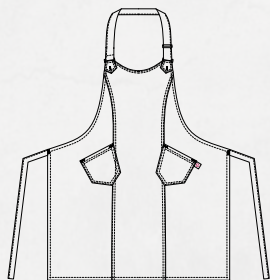
L 84 H 68,5 cm

**COD. Q1H00267**

C02 Grigio chiaro / Light grey  
Z41 Tortora / Taupe  
Z43 Verde militare / Military green  
Z44 Marrone / Brown  
U35 Bordeaux / Burgundy  
Z47 Prugna / Purple  
Z48 Blu / Blue  
M12 Grigio medio / Medium grey  
U32 Nero / Black

## Tessuto / Fabric

65% poliestere 35% cotone  
65% polyester 35% cotton  
200 g / m<sup>2</sup>



**COD. Q1H00267**

C02 Grigio chiaro / Light grey



**COD. Q1H00267**

C02 Grigio chiaro / Light Grey



**COD. Q1H00267**

Z41 Tortora / Taupe



**COD. Q1H00267**

Z43 Verde militare / Military green



**COD. Q1H00267**

Z44 Marrone / Brown



**COD. Q1H00267**

U35 Bordeaux / Burgundy



**COD. Q1H00267**

Z47 Prugna / Purple



**COD. Q1H00267**

Z48 Blu / Blue



**COD. Q1H00267**

M12 Grigio medio / Medium grey



**COD. Q1H00267**

U32 Nero / Black

# ZANTE

## Dettagli / Details

- Allacciatura collo regolabile con fibbia
- 2 grandi tasche

- Adjustable halter with buckle
- 2 big pockets

## Taglie / Sizes

Taglia unica / One size

## Misure / Dimensions

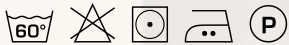
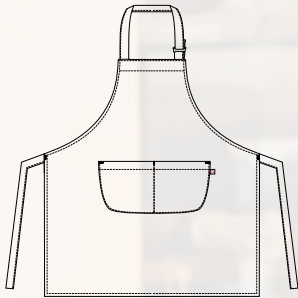
L 66 H 92 cm

**COD. Q1H00212**

C02 Grigio chiaro / Light grey  
Z41 Tortora / Taupe  
Z43 Verde militare / Military green  
Z44 Marrone / Brown  
U35 Bordeaux / Burgundy  
Z47 Prugna / Purple  
Z48 Blu / Blue  
M12 Grigio medio / Medium grey  
U32 Nero / Black

## Tessuto / Fabric

65% poliestere 35% cotone  
65% polyester 35% cotton  
200 g / m<sup>2</sup>



ACCESSORI COORDINABILI  
MATCHING ACCESSORIES  
pag. 42

**COD. Q1H00212**

U32 Nero / Black



**COD. Q1H00212**

C02 Grigio chiaro / Light grey



**COD. Q1H00212**

Z41 Tortora / Taupe



**COD. Q1H00212**

Z43 Militare / Military green



**COD. Q1H00212**

Z44 Marrone / Brown



**COD. Q1H00212**

U35 Bordeaux / Burgundy



**COD. Q1H00212**

Z47 Prugna / Purple



**COD. Q1H00212**

Z48 Blu / Blue



**COD. Q1H00212**

M12 Grigio medio / Medium grey



**COD. Q1H00212**

U32 Nero / Black

# MATERA

## Dettagli / Details

- 1 tasca
- 1 pocket

## Taglie / Sizes

Taglia unica / One size

## Misure / Dimensions

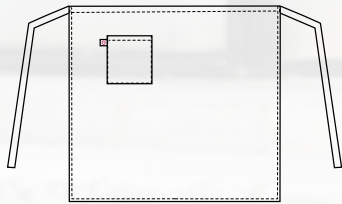
L 105 H 75 cm

**COD. Q1H00213**

C02 Grigio chiaro / Light grey  
Z41 Tortora / Taupe  
Z43 Verde militare / Military green  
Z44 Marrone / Brown  
U35 Bordeaux / Burgundy  
Z47 Prugna / Purple  
Z48 Blu / Blue  
M12 Grigio medio / Medium grey  
U32 Nero / Black

## Tessuto / Fabric

65% poliestere 35% cotone  
65% polyester 35% cotton  
200 g / m<sup>2</sup>



ACCESSORI COORDINABILI  
MATCHING ACCESSORIES  
pag. 42

**COD. Q1H00213**

Z48 Blu / Blue



**COD. Q1H00213**

C02 Grigio chiaro / Light grey



**COD. Q1H00213**

Z41 Tortora / Taupe



**COD. Q1H00213**

Z43 Militare / Military green



**COD. Q1H00213**

Z44 Marrone / Brown



**COD. Q1H00213**

U35 Bordeaux / Burgundy



**COD. Q1H00213**

Z47 Prugna / Purple



**COD. Q1H00213**

Z48 Blu / Blue



**COD. Q1H00213**

M12 Grigio medio / Medium grey



**COD. Q1H00213**

U32 Nero / Black

# BARI

## Dettagli / Details

- 1 tasca
- 1 pocket

## Taglie / Sizes

Taglia unica / One size

## Misure / Dimensions

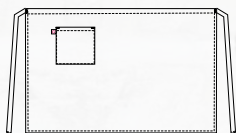
L 80 H 45 cm

**COD. Q1H00214**

C02 Grigio chiaro / Light grey  
Z41 Tortora / Taupe  
Z43 Verde militare / Military green  
Z44 Marrone / Brown  
U35 Bordeaux / Burgundy  
Z47 Prugna / Purple  
Z48 Blu / Blue  
M12 Grigio medio / Medium grey  
U32 Nero / Black

## Tessuto / Fabric

65% poliestere 35% cotone  
65% polyester 35% cotton  
200 g / m<sup>2</sup>



ACCESSORI COORDINABILI  
MATCHING ACCESSORIES  
pag. 42

**COD. Q1H00214**

U35 Bordeaux / Burgundy



**COD. Q1H00214**

C02 Grigio chiaro / Light grey



**COD. Q1H00214**

Z41 Tortora / Taupe



**COD. Q1H00214**

Z43 Militare / Military green



**COD. Q1H00214**

Z44 Marrone / Brown



**COD. Q1H00214**

U35 Bordeaux / Burgundy



**COD. Q1H00214**

Z47 Prugna / Purple



**COD. Q1H00214**

Z48 Blu / Blue



**COD. Q1H00214**

M12 Grigio medio / Medium grey



**COD. Q1H00214**

U32 Nero / Black

# CAPRI

## Dettagli / Details

- Allacciatura collo regolabile con bottoni
- 2 taschini portapenne
- 2 tasche

- Adjustable halter with buttons
- 2 pen pockets
- 2 pockets

## Taglie / Sizes

Taglia unica / One size

## Misure / Dimensions

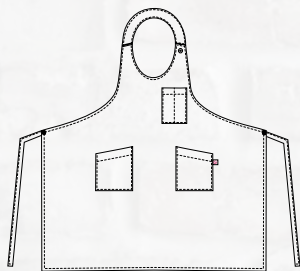
L 81 H 123 cm

**COD. Q1H00208**

U33 Caffè / Coffee  
Z44 Marrone / Brown  
U35 Bordeaux / Burgundy  
D25 Rosso / Red  
D24 Arancio / Orange  
Z46 Fucsia / Fuchsia  
C03 Giallo / Yellow  
C09 Pistacchio / Pistachio  
Z49 Verde scuro / Dark green  
D28 Turchese / Turquoise  
U38 Bluette / Royal  
Z48 Blu / Blue  
D22 Antracite / Anthracite  
U32 Nero / Black

## Tessuto / Fabric

100% poliestere  
100% polyester  
220 g / m<sup>2</sup>



**COD. Q1H00208**

U35 Bordeaux / Burgundy



**COD. Q1H00208**

U33 Caffè / Coffee



**COD. Q1H00208**

Z44 Marrone / Brown



**COD. Q1H00208**

U35 Bordeaux / Burgundy



**COD. Q1H00208**

D25 Rosso / Red



**COD. Q1H00208**

D24 Arancio / Orange



**COD. Q1H00208**

Z46 Fucsia / Fuchsia



**COD. Q1H00208**

C03 Giallo / Yellow



**COD. Q1H00208**

C09 Pistacchio / Pistachio



**COD. Q1H00208**

Z49 Verde scuro / Dark green



**COD. Q1H00208**

D28 Turchese / Turquoise



**COD. Q1H00208**

U38 Bluette / Royal



**COD. Q1H00208**

Z48 Blu / Blue



**COD. Q1H00208**

D22 Antracite / Anthracite



**COD. Q1H00208**

U32 Nero / Black

# LIPARI

## Dettagli / Details

- Allacciatura collo regolabile con bottoni
- 2 taschini portapenne
- 1 grande tasca

- Adjustable halter with buttons
- 2 pen pockets
- 1 big pocket

## Taglie / Sizes

Taglia unica / One size

## Misure / Dimensions

L 68 H 88 cm

**COD. Q1H00207**

U33 Caffè / Coffee

Z44 Marrone / Brown

U35 Bordeaux / Burgundy

D25 Rosso / Red

D24 Arancio / Orange

Z46 Fucsia / Fuchsia

C03 Giallo / Yellow

C09 Pistacchio / Pistachio

Z49 Verde scuro / Dark green

D28 Turchese / Turquoise

U38 Bluette / Royal

Z48 Blu / Blue

D22 Antracite / Anthracite

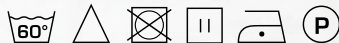
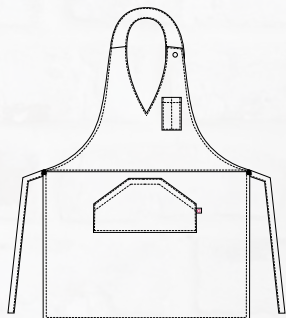
U32 Nero / Black

## Tessuto / Fabric

100% poliestere

100% polyester

220 g / m<sup>2</sup>



**COD. Q1H00207**

U33 Caffè / Coffee

ACCESSORI COORDINABILI  
MATCHING ACCESSORIES  
pag. 92 - 93



**COD. Q1H00207**

U33 Caffè / Coffee



**COD. Q1H00207**

Z44 Marrone / Brown



**COD. Q1H00207**

U35 Bordeaux / Burgundy



**COD. Q1H00207**

D25 Rosso / Red



**COD. Q1H00207**

D24 Arancio / Orange



**COD. Q1H00207**

Z46 Fucsia / Fuchsia



**COD. Q1H00207**

C03 Giallo / Yellow



**COD. Q1H00207**

C09 Pistacchio / Pistachio



**COD. Q1H00207**

Z49 Verde scuro / Dark green



**COD. Q1H00207**

D28 Turchese / Turquoise



**COD. Q1H00207**

U38 Bluette / Royal



**COD. Q1H00207**

Z48 Blu / Blue



**COD. Q1H00207**

D22 Antracite / Anthracite



**COD. Q1H00207**

U32 Nero / Black

# LATINA

## Dettagli / Details

- Allacciatura collo regolabile con bottoni
- 1 taschino portapenne
- 1 grande tasca

- Adjustable halter with buttons

- 1 pen pocket

- 1 big pocket

## Taglie / Sizes

Taglia unica / One size

## Misure / Dimensions

L 67 H 69 cm

**COD. Q1H00209**

U33 Caffè / Coffee

Z44 Marrone / Brown

U35 Bordeaux / Burgundy

D25 Rosso / Red

D24 Arancio / Orange

Z46 Fucsia / Fuchsia

C03 Giallo / Yellow

C09 Pistacchio / Pistachio

Z49 Verde scuro / Dark green

D28 Turchese / Turquoise

U38 Bluette / Royal

Z48 Blu / Blue

D22 Antracite / Anthracite

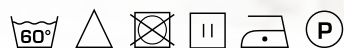
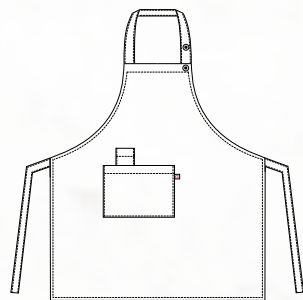
U32 Nero / Black

## Tessuto / Fabric

100% poliestere

100% polyester

220 g / m<sup>2</sup>



**COD. Q1H00209**

D25 Rosso / Red

ACCESSORI COORDINABILI  
MATCHING ACCESSORIES

pag. 92 - 93



**COD. Q1H00209**

U33 Caffè / Coffee



**COD. Q1H00209**

Z44 Marrone / Brown



**COD. Q1H00209**

U35 Bordeaux / Burgundy



**COD. Q1H00209**

D25 Rosso / Red



**COD. Q1H00209**

D24 Arancio / Orange



**COD. Q1H00209**

Z46 Fucsia / Fuchsia



**COD. Q1H00209**

C03 Giallo / Yellow



**COD. Q1H00209**

C09 Pistacchio / Pistachio



**COD. Q1H00209**

Z49 Verde scuro / Dark green



**COD. Q1H00209**

D28 Turchese / Turquoise



**COD. Q1H00209**

U38 Bluette / Royal



**COD. Q1H00209**

Z48 Blu / Blue



**COD. Q1H00209**

D22 Antracite / Anthracite



**COD. Q1H00209**

U32 Nero / Black

# GIOIA

## Dettagli / Details

- Scamiciato
- 1 grande tasca
- Coperto dietro

- Pinafore
- 1 big pocket
- Covered backside

## Taglie / Sizes

Taglia unica / One size

## Misure / Dimensions

L 83,5 H 84 cm

**COD. Q1H00218**

- U33 Caffè / Coffee
- Z44 Marrone / Brown
- U35 Bordeaux / Burgundy
- D25 Rosso / Red
- D24 Arancio / Orange
- Z46 Fucsia / Fuchsia
- C03 Giallo / Yellow
- C09 Pistacchio / Pistachio
- Z49 Verde scuro / Dark green
- D28 Turchese / Turquoise
- U38 Bluette / Royal
- Z48 Blu / Blue
- D22 Antracite / Anthracite
- U32 Nero / Black

## Tessuto / Fabric

- 100% poliestere
- 100% polyester
- 220 g / m<sup>2</sup>



**COD. Q1H00218**

U33 Caffè / Coffee

ACCESSORI COORDINABILI  
MATCHING ACCESSORIES  
pag. 94 - 95



**COD. Q1H00218**

U33 Caffè / Coffee



**COD. Q1H00218**

Z44 Marrone / Brown



**COD. Q1H00218**

U35 Bordeaux / Burgundy



**COD. Q1H00218**

D25 Rosso / Red



**COD. Q1H00218**

D24 Arancio / Orange



**COD. Q1H00218**

Z46 Fucsia / Fuchsia



**COD. Q1H00218**

C03 Giallo / Yellow



**COD. Q1H00218**

C09 Pistacchio / Pistachio



**COD. Q1H00218**

Z49 Verde scuro / Dark green



**COD. Q1H00218**

D28 Turchese / Turquoise



**COD. Q1H00218**

U38 Bluette / Royal



**COD. Q1H00218**

Z48 Blu / Blue



**COD. Q1H00218**

D22 Antracite / Anthracite



**COD. Q1H00218**

U32 Nero / Black



**COD. Q1H00210**

U33 Caffè / Coffee



**COD. Q1H00210**

Z44 Marrone / Brown



**COD. Q1H00210**

U35 Bordeaux / Burgundy



**COD. Q1H00210**

D25 Rosso / Red



**COD. Q1H00210**

D24 Arancio / Orange



**COD. Q1H00210**

Z46 Fucsia / Fuchsia



**COD. Q1H00210**

C03 Giallo / Yellow



**COD. Q1H00210**

C09 Pistacchio / Pistachio



**COD. Q1H00210**

Z49 Verde scuro / Dark green



**COD. Q1H00210**

D28 Turchese / Turquoise



**COD. Q1H00210**

U38 Bluette / Royal



**COD. Q1H00210**

Z48 Blu / Blue



**COD. Q1H00210**

D22 Antracite / Anthracite



**COD. Q1H00210**

U32 Nero / Black

# POSITANO

## Dettagli / Details

- 2 tasche

- 2 pockets

## Taglie / Sizes

Taglia unica / One size

## Misure / Dimensions

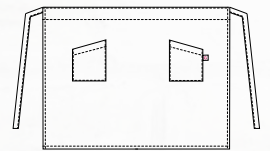
L 69 H 60 cm

**COD. Q1H00210**

U33 Caffè / Coffee  
Z44 Marrone / Brown  
U35 Bordeaux / Burgundy  
D25 Rosso / Red  
D24 Arancio / Orange  
Z46 Fucsia / Fuchsia  
C03 Giallo / Yellow  
C09 Pistacchio / Pistachio  
Z49 Verde scuro / Dark green  
D28 Turchese / Turquoise  
U38 Bluette / Royal  
Z48 Blu / Blue  
D22 Antracite / Anthracite  
U32 Nero / Black

## Tessuto / Fabric

100% poliestere  
100% polyester  
220 g / m<sup>2</sup>



**COD. Q1H00210**

U32 Nero / Black



## ho.re.ca. & services

Grembiuli  
Aprons

# PUB

### Dettagli / Details

- 3 grandi tasche

- 3 big pockets

### Taglie / Sizes

Taglia unica / One size

### Misure / Dimensions

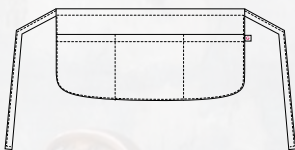
L 51 H 32 cm

**COD. Q1H00211**

U33 Caffè / Coffee  
Z44 Marrone / Brown  
U35 Bordeaux / Burgundy  
D25 Rosso / Red  
D24 Arancio / Orange  
Z46 Fucsia / Fuchsia  
C03 Giallo / Yellow  
C09 Pistacchio / Pistachio  
Z49 Verde scuro / Dark green  
D28 Turchese / Turquoise  
U38 Bluette / Royal  
Z48 Blu / Blue  
D22 Antracite / Anthracite  
U32 Nero / Black

### Tessuto / Fabric

100% poliestere  
100% polyester  
220 g / m<sup>2</sup>



**COD. Q1H00211**

U32 Nero / Black

ACCESSORI COORDINABILI  
MATCHING ACCESSORIES

pag. 94 - 95



**COD. Q1H00211**

U33 Caffè / *Coffee*



**COD. Q1H00211**

Z44 Marrone / *Brown*



**COD. Q1H00211**

U35 Bordeaux / *Burgundy*



**COD. Q1H00211**

D25 Rosso / *Red*



**COD. Q1H00211**

D24 Arancio / *Orange*



**COD. Q1H00211**

Z46 Fucsia / *Fuchsia*



**COD. Q1H00211**

C03 Giallo / *Yellow*



**COD. Q1H00211**

C09 Pistacchio / *Pistachio*



**COD. Q1H00211**

Z49 Verde scuro / *Dark green*



**COD. Q1H00211**

D28 Turchese / *Turquoise*



**COD. Q1H00211**

U38 Bluette / *Royal*



**COD. Q1H00211**

Z48 Blu / *Blue*



**COD. Q1H00211**

D22 Antracite / *Anthracite*



**COD. Q1H00211**

U32 Nero / *Black*



**COD. Q5100215**

U33 Caffè / Coffee

**COD. Q5100215**

Z44 Marrone / Brown

**COD. Q5100215**

U35 Bordeaux / Burgundy

**COD. Q5100215**

D25 Rosso / Red

**COD. Q5100215**

D24 Arancio / Orange



**COD. Q5100215**

Z46 Fucsia / Fuchsia

**COD. Q5100215**

C03 Giallo / Yellow

**COD. Q5100215**

C09 Pistacchio / Pistachio

**COD. Q5100215**

Z49 Verde scuro / Dark green



**COD. Q5100215**

D28 Turchese / Turquoise

**COD. Q5100215**

U38 Bluette / Royal

**COD. Q5100215**

Z48 Blu / Blue

**COD. Q5100215**

D22 Antracite / Anthracite

**COD. Q5100215**

U32 Nero / Black

# JERRY

## Dettagli / Details

- Regolabile con elastico  
- Adjustable with elastic band

## Taglie / Sizes

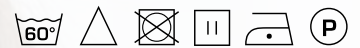
Taglia unica / One size

**COD. Q5100215**

U33 Caffè / Coffee  
Z44 Marrone / Brown  
U35 Bordeaux / Burgundy  
D25 Rosso / Red  
D24 Arancio / Orange  
Z46 Fucsia / Fuchsia  
C03 Giallo / Yellow  
C09 Pistacchio / Pistachio  
Z49 Verde scuro / Dark green  
D28 Turchese / Turquoise  
U38 Bluette / Royal  
Z48 Blu / Blue  
D22 Antracite / Anthracite  
U32 Nero / Black

## Tessuto / Fabric

100% poliestere  
100% polyester  
220 g / m<sup>2</sup>



**COD. Q5100215**

D25 Rosso / Red



**COD. Q5100216**

U33 Caffè / Coffee

**COD. Q5100216**

Z44 Marrone / Brown

**COD. Q5100216**

U35 Bordeaux / Burgundy

**COD. Q5100216**

D25 Rosso / Red

**COD. Q5100216**

D24 Arancio / Orange



**COD. Q5100216**

Z46 Fucsia / Fuchsia

**COD. Q5100216**

C03 Giallo / Yellow

**COD. Q5100216**

C09 Pistacchio / Pistachio

**COD. Q5100216**

Z49 Verde scuro / Dark green



**COD. Q5100216**

D28 Turchese / Turquoise

**COD. Q5100216**

U38 Bluette / Royal

**COD. Q5100216**

Z48 Blu / Blue

**COD. Q5100216**

D22 Antracite / Anthracite

**COD. Q5100216**

U32 Nero / Black

# PANAREA

## Dettagli / Details

- Regolabile con elastico
- Adjustable with elastic band

## Taglie / Sizes

Taglia unica / One size

**COD. Q5100216**

- U33 Caffè / Coffee
- Z44 Marrone / Brown
- U35 Bordeaux / Burgundy
- D25 Rosso / Red
- D24 Arancio / Orange
- Z46 Fucsia / Fuchsia
- C03 Giallo / Yellow
- C09 Pistacchio / Pistachio
- Z49 Verde scuro / Dark green
- D28 Turchese / Turquoise
- U38 Bluette / Royal
- Z48 Blu / Blue
- D22 Antracite / Anthracite
- U32 Nero / Black

## Tessuto / Fabric

100% poliestere  
100% polyester  
220 g / m<sup>2</sup>



**COD. Q5100216**

U33 Caffè / Coffee

# CRAVATTA UOMO

## Dettagli / Details

- Tinta unita, colori assortiti,  
fantasia

- Plain coloured, several colours,  
patterned

## Taglie / Sizes

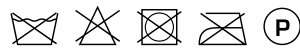
Taglia unica / One size

**COD. Q51X0235**

Art. 511

## Tessuto / Fabric

100% poliestere  
100% polyester



**COD. Q51X0235**

Art. 511  
C02 Grigio chiaro  
Light grey



**COD. Q51X0235**

Art. 511  
C01 Bianco  
White



**COD. Q51X0235**

Art. 511  
D24 Arancio  
Orange



**COD. Q51X0235**

Art. 511  
D25 Rosso  
Red



**COD. Q51X0235**

Art. 511  
U35 Bordeaux  
Burgundy



**COD. Q51X0235**

Art. 511  
Z44 Marrone  
Brown



**COD. Q51X0235**

Art. 511  
Z48 Blu  
Blue



**COD. Q51X0235**

Art. 511  
U32 Nero  
Black

# CRAVATTA DONNA

## Dettagli / Details

- Chiusura con velcro  
- Velcro closure

## Taglie / Sizes

Taglia unica / One size

**COD. Q51X0182**

Art. 19P051871

## Tessuto / Fabric

100% poliestere  
100% polyester



**COD. Q51X0182**

Art. 19P051871  
C02 Grigio chiaro  
Light grey



**COD. Q51X0182**

Art. 19P051871  
C01 Bianco  
White



**COD. Q51X0182**

Art. 19P051871  
D24 Arancione  
Orange



**COD. Q51X0182**

Art. 19P051871  
D25 Rosso  
Red



**COD. Q51X0182**

Art. 19P051871  
U35 Bordeaux  
Burgundy



**COD. Q51X0182**

Art. 19P051871  
Z44 Marrone  
Brown



**COD. Q51X0182**

Art. 19P051871  
Z48 Blu  
Blue



**COD. Q51X0182**

Art. 19P051871  
U32 Nero  
Black

# PAPILLON

## Taglie / Sizes

Taglia unica / One size

**COD. Q51X0234**

Art. 409



**COD. Q51X0234**

Art. 409  
C01 Bianco  
White



**COD. Q51X0234**

Art. 409  
U32 Nero  
Black

# TOMMY

## Dettagli / Details

- Regolabile con velcro  
- Adjustable with velcro

## Taglie / Sizes

Taglia unica / One size



**COD. Q5IX0269**

Art. 23P051375  
J48 Jeans blu / Blue jeans



**COD. Q5IX0269**

Art. 23P051375  
Z41 Tortora / Taupe



**COD. Q5IX0269**

Art. 23P051375  
J48 Jeans blu / Blue jeans  
Z41 Tortora / Taupe

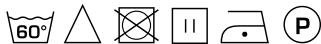
## Tessuto / Fabric

98% cotone 2% elasthan  
98% cotton 2% elastane  
200 g / m<sup>2</sup>



**COD. Q5IX0145**

Art. 20P0512058  
C02 Grigio / Grey



**COD. Q5IX0145**

Art. 20P0512058  
D21 Beige / Beige



**COD. Q5IX0145**

Art. 20P0512058  
C02 Grigio / Grey  
D21 Beige / Beige  
Z44 Marrone / Brown

## Tessuto / Fabric

100% poliestere  
100% polyester  
170 g / m<sup>2</sup>

**COD. Q5IX0277**

Art. 23P0512058  
U35 Bordeaux / Burgundy

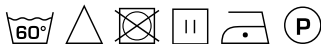
## Tessuto / Fabric

100% poliestere  
100% polyester  
170 g / m<sup>2</sup>



**COD. Q5IX0145**

Art. 20P0512058  
Z44 Marrone / Brown



**COD. Q5IX0277**

Art. 23P0512058  
U35 Bordeaux / Burgundy



# COPPOLA

## Dettagli / Details

- Regolabile con elastico  
- Adjustable with elastic

## Taglie / Sizes

Taglia unica / One size

**COD. Q5IX0146**

Art. 19P051132  
J32 Jeans nero / Black jeans

## Tessuto / Fabric

75% cotone 23% poliestere 2% elasthan  
75% cotton 23% polyester 2% elastane  
210 g / m<sup>2</sup>

**COD. Q5IX0147**

Art. 18P051060  
J48 Jeans blu / Jeans blue

## Tessuto / Fabric

100% cotone  
100% cotton  
260 g / m<sup>2</sup>



**COD. Q5IX0146**

Art. 19P051132  
J32 Jeans nero / Black jeans



**COD. Q5IX0147**

Art. 18P051060  
J48 Jeans blu / Blue jeans





Giacca **ELIO**

**COD. Q1CX0152**

Art. 17P01C966  
pag. 102



**Giblor's**  
italian worklife specialist

Giacca **DANA**

**COD. Q1CX0148**

Art. 17P01C901  
pag. 100

## DANA

### Dettagli / Details

- Sfoderata
- 2 bottoni
- 2 tasche a filetto

- Unlined
- 2 buttons
- 2 welt pockets

### Taglie / Sizes

XS ÷ 3XL Slim Fit

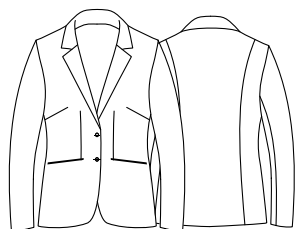


**COD. Q1CX0148**

Art. 17P01C901  
U32 Nero / Black

### Tessuto / Fabric

95% poliestere 5% elasthan  
95% polyester 5% elastane  
220 g / m<sup>2</sup>



## LAYLA

### Dettagli / Details

- Passanti cintura
- Bottone 4 fori - Chiusura zip
- 2 tasche - Fondo stretto

- Belt loops
- 4-hole button - Zip fly
- 2 pockets - Slim leg

### Taglie / Sizes

XS ÷ 3XL

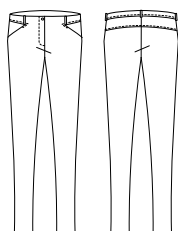


**COD. Q1CX0150**

Art. 17P01P903  
U32 Nero / Black

### Tessuto / Fabric

95% poliestere 5% elasthan  
95% polyester 5% elastane  
220 g / m<sup>2</sup>





## DANA

### Dettagli / Details

- Sfoderata
- 2 bottoni
- 2 tasche a filetto

- Unlined
- 2 buttons
- 2 welt pockets

### Taglie / Sizes

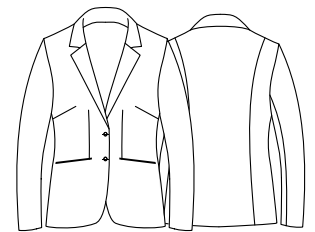
XS ÷ 3XL Slim Fit

**COD. Q1CX0149**

Art. 20P01C901  
Z48 Blu / Blue

### Tessuto / Fabric

95% poliestere 5% elasthan  
95% polyester 5% elastane  
220 g / m<sup>2</sup>



## LAYLA



### Dettagli / Details

- Passanti cintura
- Bottone 4 fori - Chiusura zip
- 2 tasche - Fondo stretto

- Belt loops
- 4-hole button - Zip fly
- 2 pockets - Slim leg

### Taglie / Sizes

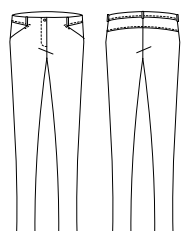
XS ÷ 3XL

**COD. Q1CX0151**

Art. 20P01P903  
Z48 Blu / Blue

### Tessuto / Fabric

95% poliestere 5% elasthan  
95% polyester 5% elastane  
220 g / m<sup>2</sup>



## ELIO

### Dettagli / Details

- Sfoderata - 2 bottoni
- 2 tasche a filetto

- Unlined - 2 buttons
- 2 welt pockets

### Taglie / Sizes

44 ÷ 58 Slim Fit

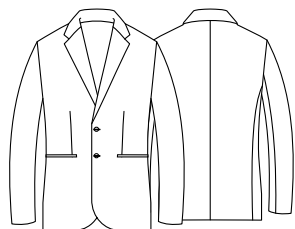


**COD. Q1CX0152**

Art. 17P01C966  
U32 Nero / Black

### Tessuto / Fabric

95% poliestere 5% elasthan  
95% polyester 5% elastane  
220 g / m<sup>2</sup>



## GIOVANNI

### Dettagli / Details

- Sfoderato
- Passanti cintura - Vita bassa
- 2 tasche alla francese
- 2 taschine posteriori - Fondo stretto

- Unlined
- Belt loops - Low waist
- 2 side pockets
- 2 rear pockets - Slim leg

### Taglie / Sizes

42 ÷ 58 Slim Fit

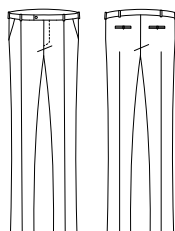


**COD. Q1PX0154**

Art. 17P01P546  
U32 Nero / Black

### Tessuto / Fabric

95% poliestere 5% elasthan  
95% polyester 5% elastane  
220 g / m<sup>2</sup>





## ELIO



### Dettagli / Details

- Sfoderata - 2 bottoni
- 2 tasche a filetto

- Unlined - 2 buttons
- 2 welt pockets

### Taglie / Sizes

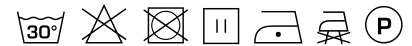
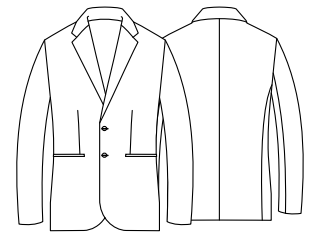
44 ÷ 58 Slim Fit

**COD. Q1CX0153**

Art. 20P01C966  
Z48 Blu / Blue

### Tessuto / Fabric

95% poliestere 5% elasthan  
95% polyester 5% elastane  
220 g / m<sup>2</sup>



## GIOVANNI



### Dettagli / Details

- Sfoderato
- Passanti cintura - Vita bassa
- 2 tasche alla francese
- 2 taschine posteriori - Fondo stretto

- Unlined
- Belt loops - Low waist
- 2 side pockets
- 2 rear pockets - Slim leg

### Taglie / Sizes

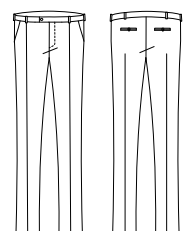
42 ÷ 58 Slim Fit

**COD. Q1PX0155**

Art. 20P01P546  
Z48 Blu / Blue

### Tessuto / Fabric

95% poliestere 5% elasthan  
95% polyester 5% elastane  
220 g / m<sup>2</sup>



# ROSITA

## Dettagli / Details

- Sfoderato
- 2 tasche
- 4 bottoni 4 fori
- Fascette regolabili

- Unlined
- 2 pockets
- 4 buttons with four-holes
- Adjustable buckle

## Taglie / Sizes

XS ÷ 3XL Regular Fit

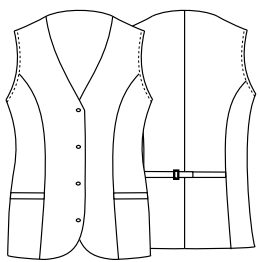


**COD. Q1EX0161**

Art. 270/E  
U32 Nero / Black

## Tessuto / Fabric

100% poliestere  
100% polyester  
160 g / m<sup>2</sup>



**COD. Q1EX0163**

Art. 270BX  
U35 Bordeaux / Burgundy

100% poliestere / 100% polyester  
220 g / m<sup>2</sup>



**COD. Q1EX0162**

Art. 270  
Z48 Blu / Blue

100% poliestere / 100% polyester  
160 g / m<sup>2</sup>



Gilet **ROSITA**

**COD. Q1EX0161**

Art. 270/E  
pag. 104

Camicia **AURORA**

**COD. Q1NX0167**

Art. 1600  
pag. 108

# MIGUEL

## Dettagli / Details

- Foderato
- 2 tasche
- 4 bottoni 4 fori
- Fascette regolabili

- Lined
- 2 pockets
- 4 buttons with four-holes
- Adjustable buckle

## Taglie / Sizes

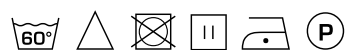
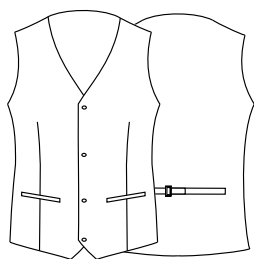
XS ÷ 4XL Regular Fit

**COD. Q1EX0158**

Art. 106/E  
U32 Nero / Black

## Tessuto / Fabric

100% poliestere  
100% polyester  
160 g / m<sup>2</sup>



**COD. Q1EX0160**

Art. 106BX  
U35 Bordeaux / Burgundy

100% poliestere / 100% polyester  
220 g / m<sup>2</sup>



**COD. Q1EX0159**

Art. 106  
Z48 Blu / Blue

100% poliestere / 100% polyester  
160 g / m<sup>2</sup>



**COD. Q1PX0157**

Art. 90/B  
Z48 Blu / Blue



**COD. Q1PX0156**

Art. 90  
U32 Nero / Black

## MATTEO

### Dettagli / Details

- Sfoderato
- Passanti cintura
- 2 tasche alla francese
- 2 taschine posteriori
- Fondo stretto

- Unlined
- Belt loops
- 2 side pockets
- 2 rear pockets
- Slim leg

### Taglie / Sizes

40 ÷ 64 Slim Fit

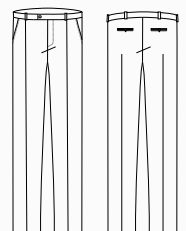
**COD. Q1PX0157**

Art. 90/B  
Z48 Blu / Blue

**COD. Q1PX0156**

Art. 90  
U32 Nero / Black

**Tessuto / Fabric**  
100% poliestere  
100% polyester  
160 g / m<sup>2</sup>





## AURORA

### Dettagli / Details

- Collo classico

- Classic collar

### Taglie / Sizes

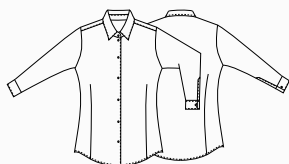
XS ÷ 3XL Slim Fit

**COD. Q1NX0167**

Art. 1600  
C01 Bianco / White

### Tessuto / Fabric

65% poliestere 35% cotone  
65% polyester 35% cotton  
110 g / m<sup>2</sup>



## FARA

### Dettagli / Details

- Collo classico

- Classic collar

### Taglie / Sizes

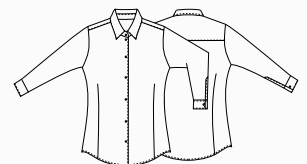
XS ÷ 3XL Slim Fit

**COD. Q1NX0168**

Art. 11P01057  
U32 Nero / Black

### Tessuto / Fabric

65% poliestere 35% cotone  
65% polyester 35% cotton  
110 g / m<sup>2</sup>



# PRINCE

## Dettagli / Details

- Collo classico
- Polsino regolabile

- Classic collar
- Adjustable cuff

## Taglie / Sizes

XS ÷ 5XL Slim Fit

**COD. Q1NX0166**

Art. 11P01056  
C01 Bianco / White  
U32 Nero / Black

## Tessuto / Fabric

65% poliestere 35% cotone  
65% polyester 35% cotton  
110 g / m<sup>2</sup>



**COD. Q1NX0166**

Art. 11P01056  
U32 Nero / Black



**COD. Q1NX0166**

Art. 11P01056  
C01 Bianco / White

# NOVAK

## Dettagli / Details

- Collo coreano
- Polsino regolabile

- Mandarin collar
- Adjustable cuff

## Taglie / Sizes

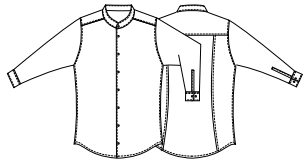
S ÷ 4XL Slim Fit

**COD. Q1NX0164**

Art. 19P01N085  
C01 Bianco / White  
U32 Nero / Black

## Tessuto / Fabric

65% poliestere 35% cotone  
65% polyester 35% cotton  
110 g / m<sup>2</sup>



**COD. Q1NX0164**

Art. 19P01N085  
U32 Nero / Black



**COD. Q1NX0164**

Art. 19P01N085  
C01 Bianco / White

# VENUS

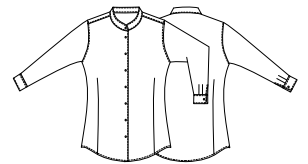
**Dettagli / Details**  
- Collo coreano  
- Mandarin collar

**Taglie / Sizes**  
XS ÷ 4XL Slim Fit

**COD. Q1NX0165**

Art. 19P01N086  
U32 Nero / Black  
C01 Bianco / White

**Tessuto / Fabric**  
65% poliestere 35% cotone  
65% polyester 35% cotton  
110 g / m<sup>2</sup>



**COD. Q1NX0165**

Art. 19P01N086  
C01 Bianco / White



**COD. Q1NX0165**

Art. 19P01N086  
U32 Nero / Black



**COD. Q9R00220**

C02 Grigio chiaro / Light grey



**COD. Q9R00220**

U35 Bordeaux / Burgundy



**COD. Q9R00220**

D29 Verde / Green



**COD. Q9R00220**

Z48 Blu / Blue



**COD. Q9R00220**

U32 Nero / Black

# ORTENSIA

## Dettagli / Details

- Abbottonatura a vista con bottoni 4 fori  
- 2 tasche
- Visible buttoning with 2 hole buttons  
- 2 pockets

## Taglie / Sizes

XS ÷ 4XL Slim Fit

**COD. Q9R00220**

C02 Grigio chiaro / Light grey  
U35 Bordeaux / Burgundy  
D29 Verde / Green  
Z48 Blu / Blue  
U32 Nero / Black

## Tessuto / Fabric

65% poliestere 35% cotone  
65% polyester 35% cotton  
115 g / m<sup>2</sup>



**COD. Q9R00220**

C02 Grigio chiaro / Light grey





## VIOLA

### Dettagli / Details

- Abbottonatura a vista con bottoni 4 fori
- 3 tasche
- Maniche ad aletta
- Ampia vestibilità

- Visible buttoning with 4 hole buttons
- 3 pockets
- Flap sleeves
- Large fit

### Taglie / Sizes

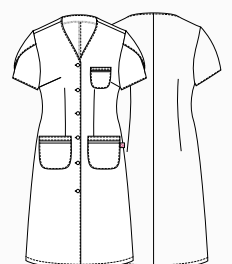
XS ÷ 4XL    Oversize

**COD. Q9R00221**

Q35 Quadro bordeaux / *Burgundy checkered*  
Q32 Quadro nero / *Black checkered*

### Tessuto / Fabric

60% cotone 40% poliestere  
60% cotton 40% polyester  
145 g / m<sup>2</sup>





## MAGNOLIA

### Dettagli / Details

- Senza tasche
- No pockets

### Taglie / Sizes

Taglia unica / One size

### Misure / Dimensions

L 50 H 43 cm

L: Larghezza fondo / Bottom width

**COD. Q9H00224**

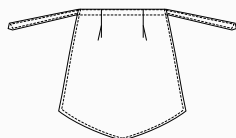
C01 Bianco / White

### Tessuto / Fabric

100% cotone

100% cotton

185 g / m<sup>2</sup>



## MIMOSA

### Dettagli / Details

- Senza tasche
- No pockets

### Taglie / Sizes

Taglia unica / One size

### Misure / Dimensions

L 50 H 58 cm

L: Larghezza fondo / Bottom width

H: Altezza dalla punta dello scollo

Height from the tip of the neckline

**COD. Q9H00225**

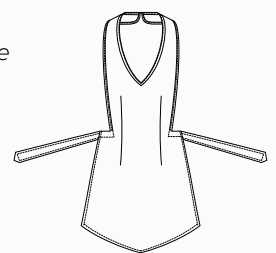
C01 Bianco / White

### Tessuto / Fabric

100% cotone

100% cotton

185 g / m<sup>2</sup>



# CAMELIA

## Dettagli / Details

- Abbottonatura a vista con bottoni 4 fori
- 2 tasche
- 2 spacchetti laterali

- Visible buttoning with 4 hole buttons
- 2 pockets
- 2 side vents

## Taglie / Sizes

XS ÷ 4XL Regular Fit

**COD. Q9K00222**

C01 Bianco / White

## Tessuto / Fabric

65% poliestere 35% cotone  
65% polyester 35% cotton  
145 g / m<sup>2</sup>

**COD. Q9K00223**

C02 Grigio chiaro / Light grey

U35 Bordeaux / Burgundy

D29 Verde / Green

Z48 Blu / Blue

U32 Nero / Black

## Tessuto / Fabric

65% poliestere 35% cotone  
65% polyester 35% cotton  
115 g / m<sup>2</sup>



**COD. Q9K00223**

U35 Bordeaux / Burgundy



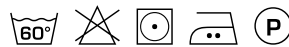
**COD. Q9K00222**

C01 Bianco / White



**COD. Q9K00223**

C02 Grigio chiaro / Light grey



**COD. Q9K00223**

U35 Bordeaux / Burgundy



**COD. Q9K00223**

D29 Verde / Green



**COD. Q9K00223**

Z48 Blu / Blue



**COD. Q9K00223**

U32 Nero / Black



# ALTEA

## Dettagli / Details

- Chiusura con zip rovesciata
- 2 tasche

- Inverted zip fastening
- 2 pockets

## Taglie / Sizes

XS ÷ 4XL Slim Fit

**COD. Q9K00226**

C01 Bianco / White

## Tessuto / Fabric

100% cotone

100% cotton

185 g / m<sup>2</sup>

**COD. Q9K00227**

C04 Salmone / Salmon

C08 Azzurro chiaro / Light blue

M19 Verde acqua / Acqua green

## Tessuto / Fabric

70% poliestere 30% cotone

70% polyester 30% cotton

130 g / m<sup>2</sup>



**COD. Q9K00226**

C01 Bianco / White



**COD. Q9K00227**

C04 Salmone / Salmon



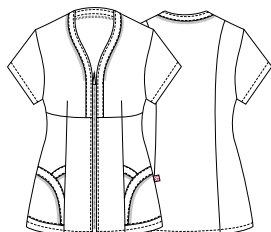
**COD. Q9K00227**

C08 Azzurro chiaro / Light blue



**COD. Q9K00227**

M19 Verde acqua / Acqua green





**COD. Q9K00227**

C04 Salmone / Salmon

# PRIMULA

## Dettagli / Details

- Abbottonatura a vista con automatici
- 2 tasche - Maniche arrotolabili

- Visible buttoning with press studs
- 2 pockets - Roll-up sleeves

## Taglie / Sizes

XS ÷ 3XL Regular Fit

**COD. Q9K00249**

C01 Bianco / White

**COD. Q9K00251**

D25 Rosso / Red

## Tessuto / Fabric

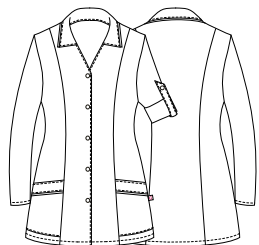
65% poliestere 35% cotone  
65% polyester 35% cotton  
140 g / m<sup>2</sup>

**COD. Q9K00250**

Q32 Quadro nero / Black checkered

## Tessuto / Fabric

60% cotone 40% poliestere  
60% cotton 40% polyester  
100 g / m<sup>2</sup>



**COD. Q9K00249**

C01 Bianco / White



**COD. Q9K00251**

D25 Rosso / Red



**COD. Q9K00250**

Q32 Quadro nero / Black checkered





**COD. Q9K00250**

Q32 Quadro nero / Black checkered

# RICKY

## Dettagli / Details

- Abbottonatura a vista con automatici
- 3 tasche - Maniche arrotolabili
- 2 spacchetti nel fianco

- Visible buttoning with press studs
- 3 pockets - Roll-up sleeves
- 2 side vents

## Taglie / Sizes

S ÷ 4XL Comfort Fit

**COD. Q9K00252**

C01 Bianco / White

**COD. Q9K00254**

D25 Rosso / Red

## Tessuto / Fabric

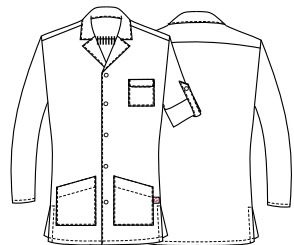
65% poliestere 35% cotone  
65% polyester 35% cotton  
140 g / m<sup>2</sup>

**COD. Q9K00253**

Q32 Quadro nero / Black checkered

## Tessuto / Fabric

60% cotone 40% poliestere  
60% cotton 40% polyester  
100 g / m<sup>2</sup>



**COD. Q9K00252**

C01 Bianco / White



**COD. Q9K00254**

D25 Rosso / Red



**COD. Q9K00253**

Q32 Quadro nero / Black checkered





**COD. Q9K00254**

D25 Rosso / Red



**COD. Q9H00228**

Q32 Quadro nero / Black checkered



**COD. Q9H00229**

C02 Grigio chiaro / Light grey



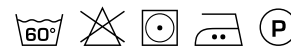
**COD. Q9H00229**

U35 Bordeaux / Burgundy



**COD. Q9H00229**

D29 Verde / Green



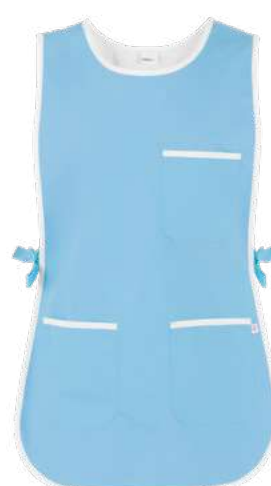
**COD. Q9H00229**

Z48 Blu / Blue



**COD. Q9H00270**

C04 Salmone / Salmon



**COD. Q9H00270**

C08 Azzurro chiaro / Light blue



**COD. Q9H00270**

M19 Verde acqua / Aqua green



**COD. Q9H00232**

C01 Bianco / White



**COD. Q9H00233**

D25 Rosso / Red



**COD. Q9H00233**

U32 Nero / Black



## ZEFIRO

### Dettagli / Details

- 3 tasche
- Chiusura con laccetti sui fianchi

- 3 pockets
- Closure with strings on the sides

### Taglie / Sizes

Taglia unica / One size

### Misure / Dimensions

L 51 H 80,5 cm

**COD. Q9H00228**

Q32 Quadro nero / Black checkered

### Tessuto / Fabric

60% cotone 40% poliestere  
60% cotton 40% polyester  
100 g / m<sup>2</sup>

**COD. Q9H00229**

C02 Grigio chiaro / Light grey  
U35 Bordeaux / Burgundy  
D29 Verde / Green  
Z48 Blu / Blue

### Tessuto / Fabric

65% poliestere 35% cotone  
65% polyester 35% cotton  
115 g / m<sup>2</sup>

**COD. Q9H00270**

C04 Salmone / Salmon  
C08 Azzurro chiaro / Light blue  
M19 Verde acqua / Acqua green

### Tessuto / Fabric

70% poliestere 30% cotone  
70% polyester 30% cotton  
130 g / m<sup>2</sup>

**COD. Q9H00232**

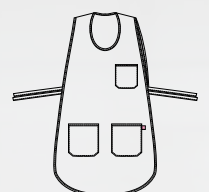
C01 Bianco / White

**COD. Q9H00233**

D25 Rosso / Red  
U32 Nero / Black

### Tessuto / Fabric

65% poliestere 35% cotone  
65% polyester 35% cotton  
140 g / m<sup>2</sup>



**COD. Q9H00233**

U32 Nero / Black





La collezione **Giblor's Essential** amplia l'offerta del brand e propone una gamma di prodotti ancor più competitiva per il settore **medicale e wellness**.

Grazie al know-how maturato dall'azienda in materia di tessuti e trattamenti, che ne assicurano le performance, i capi che fanno parte della linea **Essential Health&Wellness** garantiscono facilità di manutenzione e durata nel tempo, oltre che grande libertà di movimento e un fit perfetto, elementi imprescindibili per una divisa da lavoro di qualità.

La linea propone un ricco e variegato assortimento di casacche destinate al settore wellness, e molte sono le proposte per il settore medico, dove il colore è grande protagonista, grazie soprattutto ad alcune nuove nuance molto contemporanee.

# ESSENTIAL

## COLLECTION

*The **Giblor's Essential** collection expands the brand offer and proposes an even more competitive range of products for the **medical and wellness** sector.*

*Thanks to the know-how gained by the company in the field of fabrics and treatments, which ensure the performance, the garments that are part of the **Essential Health&Wellness** line guarantee ease of maintenance and durability, as well as great freedom of movement and a perfect fit, which are essential elements for a quality work uniform.*

*The line offers a rich and varied assortment of jackets intended for the wellness sector, as well as many proposals for the medical sector, where colour is a great protagonist, thanks especially to some new contemporary nuances.*



## MIKE

### Dettagli / Details

- Abbottonatura a vista con automatici
- Taschino sul petto
- 2 tasche
- Polsino con elastico

- Visible buttoning with press studs
- Breast pocket
- 2 pockets
- Cuff with elastic band

### Taglie / Sizes

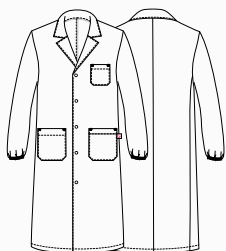
XS ÷ 4XL Regular Fit

**COD. Q3R00247**

C01 Bianco / White

### Tessuto / Fabric

100% cotone  
100% cotton  
185 g / m<sup>2</sup>



## MILLY

### Dettagli / Details

- Abbottonatura a vista con automatici
- Taschino sul petto
- 2 tasche
- Polsino con elastico

- Visible buttoning with press studs
- Breast pocket
- 2 pockets
- Cuff with elastic band

### Taglie / Sizes

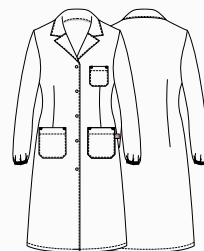
XS ÷ 3XL Regular Fit

**COD. Q3R00248**

C01 Bianco / White

### Tessuto / Fabric

100% cotone  
100% cotton  
185 g / m<sup>2</sup>





## TRISTANO

### Dettagli / Details

- Abbottonatura nascosta con bottoni 4 fori
- Taschino sul petto
- 2 tasche
- Polsino con elastico

- *Concealed buttoning with 4-hole buttons*
- *Breast pocket*
- *2 pockets*
- *Cuff with elastic band*

### Taglie / Sizes

S ÷ 4XL Slim Fit

**COD. Q3R00261**

C01 Bianco / White

### Tessuto / Fabric

100% cotone  
100% cotton  
185 g / m<sup>2</sup>



## ISOTTA

### Dettagli / Details

- Abbottonatura nascosta con bottoni 4 fori
- Taschino sul petto
- 2 tasche
- Polsino con elastico

- *Concealed buttoning with 4-hole buttons*
- *Breast pocket*
- *2 pockets*
- *Cuff with elastic band*

### Taglie / Sizes

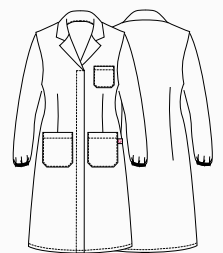
XS ÷ 3XL Regular Fit

**COD. Q3R00262**

C01 Bianco / White

### Tessuto / Fabric

100% cotone  
100% cotton  
185 g / m<sup>2</sup>





Casacca **GABRIELE**

**COD. Q3KX0176**

Art. 21P03K194  
pag. 132



Casacca **ALICE**

**COD. Q3KX0179**

Art. 21P03K195  
pag. 134

# GABRIELE

## Dettagli / Details

- Chiusura con zip rovesciata
- Doppio cursore
- Taschino sul petto
- 2 tasche
- Polsini con elastico
- 2 spacchetti dietro

- *Inverted zip fastening*
- *Double slide*
- *Breast pocket*
- *2 pockets*
- *Cuffs with elastic band*
- *2 rear vents*

## Taglie / Sizes

S ÷ 4XL Slim Fit

**COD. Q3KX0174**

Art. 20P03K191  
C01 Bianco / White

**COD. Q3KX0175**

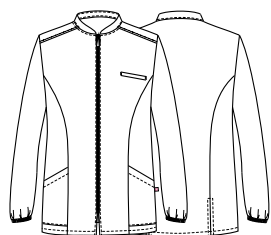
Art. 20P03K194  
M18 Azzurro / Light blue  
D29 Verde / Green

**COD. Q3KX0176**

Art. 21P03K194  
Z48 Blu / Blue

## Tessuto / Fabric

100% cotone  
100% cotton  
185 g / m<sup>2</sup>



**COD. Q3KX0174**

Art. 20P03K191  
C01 Bianco / White



**COD. Q3KX0175**

Art. 20P03K194  
D29 Verde / Green  
100% cotone / cotton - 185 g / m<sup>2</sup>



**COD. Q3KX0175**

Art. 20P03K194  
M18 Azzurro / Light blue  
100% cotone / cotton - 185 g / m<sup>2</sup>



**COD. Q3KX0176**

Art. 21P03K194  
Z48 Blu / Blue  
100% cotone / cotton - 185 g / m<sup>2</sup>



# ALICE

## Dettagli / Details

- Chiusura con zip rovesciata
- Doppio cursore
- Taschino sul petto
- 2 tasche
- Polsini con elastico

- *Inverted zip fastening*
- *Double slide*
- *Breast pocket*
- *2 pockets*
- *Cuffs with elastic band*

## Taglie / Sizes

XS ÷ 3XL Slim Fit

**COD. Q3KX0177**

Art. 20P03K192  
C01 Bianco / White

**COD. Q3KX0178**

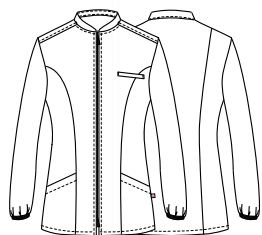
Art. 20P03K195  
M18 Azzurro / Light blue  
D29 Verde / Green

**COD. Q3KX0179**

Art. 21P03K195  
Z48 Blu / Blue

## Tessuto / Fabric

100% cotone  
100% cotton  
185 g / m<sup>2</sup>



**COD. Q3KX0177**

Art. 20P03K192  
C01 Bianco / White



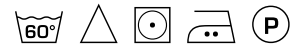
**COD. Q3KX0178**

Art. 20P03K195  
D29 Verde / Green  
100% cotone / cotton - 185 g / m<sup>2</sup>



**COD. Q3KX0178**

Art. 20P03K195  
M18 Azzurro / Light blue  
100% cotone / cotton - 185 g / m<sup>2</sup>



**COD. Q3KX0179**

Art. 21P03K195  
Z48 Blu / Blue  
100% cotone / cotton - 185 g / m<sup>2</sup>



# ALAN

## Dettagli / Details

- Pantalone unisex
- Elastico e coulisse in vita
- 2 tasche
- 1 tasca sul retro

- Unisex pants
- Elasticated waistband with drawstring
- 2 pockets
- 1 rear pocket

## Taglie / Sizes

XS ÷ 4XL Slim Fit

**COD. Q3PX0180**

Art. 1340  
M18 Azzurro / Light blue  
D29 Verde / Green

**COD. Q3PX0181**

Art. 21P03P1340  
Z48 Blu / Blue

## Tessuto / Fabric

100% cotone  
100% cotton  
185 g / m<sup>2</sup>



**COD. Q3PX0180**

Art. 1340  
M18 Azzurro / Light blue



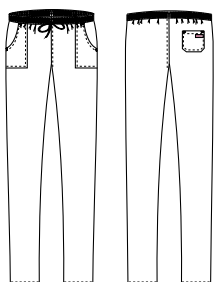
**COD. Q3PX0180**

Art. 1340  
D29 Verde / Green



**COD. Q3PX0181**

Art. 21P03P1340  
Z48 Blu / Blue



# PIERO

## Dettagli / Details

- 2 tasche
- Taschino sul petto
- 2 spacchetti laterali

- 2 pockets
- Breast pocket
- 2 side vents

## Taglie / Sizes

XS ÷ 4XL Slim Fit

**COD. Q3KX0169**

Art. 1335  
M18 Azzurro / Light blue  
D29 Verde / Green

**COD. Q3KX0170**

Art. 21P03K1335  
Z48 Blu / Blue

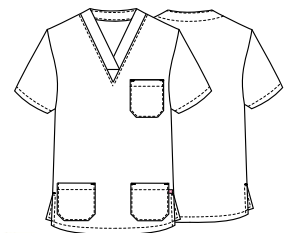
## Tessuto / Fabric

100% cotone / cotton  
185 g / m<sup>2</sup>



**COD. Q3KX0169**

Art. 1335  
M18 Azzurro / Light blue



**COD. Q3KX0169**

Art. 1335  
D29 Verde / Green



**COD. Q3KX0170**

Art. 21P03K1335  
Z48 Blu / Blue



# MILENA

## Dettagli / Details

- Taschino sul petto
- 2 tasche
- 2 spacchetti laterali

- Breast pocket
- 2 pockets
- 2 side vents

## Taglie / Sizes

XS ÷ 3XL Slim Fit

**COD. Q3KX0171**

Art. 20P03K193  
C01 Bianco / White

**COD. Q3KX0172**

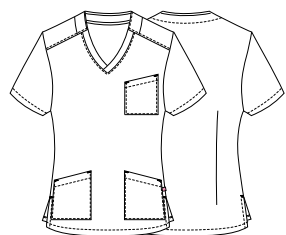
Art. 20P03K196  
M18 Azzurro / Light blue  
D29 Verde / Green

**COD. Q3KX0173**

Art. 21P03K196  
Z48 Blu / Blue

## Tessuto / Fabric

100% cotone  
100% cotton  
185 g / m<sup>2</sup>



**COD. Q3KX0171**

Art. 20P03K193  
C01 Bianco / White



**COD. Q3KX0172**

Art. 20P03K196  
D29 Verde / Green  
100% cotone / cotton - 185 g / m<sup>2</sup>



**COD. Q3KX0172**

Art. 20P03K196  
M18 Azzurro / Light blue  
100% cotone / cotton - 185 g / m<sup>2</sup>



**COD. Q3KX0173**

Art. 21P03K196  
Z48 Blu / Blue  
100% cotone / cotton - 185 g / m<sup>2</sup>



# GARY

## Dettagli / Details

- Casacca unisex
- Taschino sul petto
- 2 tasche
- 2 spacchetti laterali

- Unisex tunic
- Breast pocket
- 2 pockets
- 2 side vents

## Taglie / Sizes

XS ÷ 4XL Slim Fit

**COD. Q3K00244**

P18 Profilo azzurro / Light blue piping

P24 Profilo arancio / Orange piping

P29 Profilo verde / Green piping

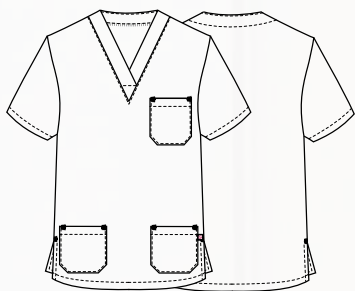
P48 Profilo blu / Blue piping

## Tessuto / Fabric

100% cotone

100% cotton

185 g / m<sup>2</sup>



ACCESSORI COORDINABILI  
MATCHING ACCESSORIES

pag. 160

PANTALONI COORDINABILI  
MATCHING PANTS

pag. 144 - 145

**COD. Q3K00244**

P24 Profilo arancio / Orange piping

CASACCA UNISEX  
UNISEX TUNIC



**COD. Q3K00244**

P18 Profilo azzurro / *Light blue piping*



**COD. Q3K00244**

P24 Profilo arancio / *Orange piping*



**COD. Q3K00244**

P29 Profilo verde / *Green piping*



**COD. Q3K00244**

P48 Profilo blu / *Blue piping*

# JASON

## Dettagli / Details

- Casacca unisex
- Taschino sul petto
- 2 tasche
- 2 spacchetti laterali

- Unisex tunic
- Breast pocket
- 2 pockets
- 2 side vents

## Taglie / Sizes

XS ÷ 4XL Slim Fit

**COD. Q3K00242**

C01 Bianco / White

## Tessuto / Fabric

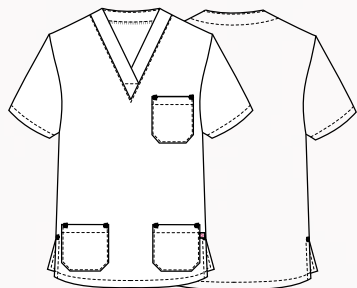
100% cotone  
100% cotton  
185 g / m<sup>2</sup>

**COD. Q3K00243**

C09 Pistacchio / Pistachio  
C07 Lilla chiaro / Light lilac  
D24 Arancio / Orange  
Z46 Fucsia / Fuchsia  
U38 Bluette / Royal

## Tessuto / Fabric

100% cotone  
100% cotton  
200 g / m<sup>2</sup>



**ACCESSORI COORDINABILI**  
**MATCHING ACCESSORIES**  
pag. 160

**PANTALONI COORDINABILI**  
**MATCHING PANTS**  
pag. 144 - 145



**COD. Q3K00243**

Z46 Fucsia / Fuchsia

**CASACCA UNISEX**  
**UNISEX TUNIC**



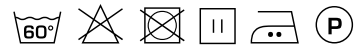
**COD. Q3K00242**

C01 Bianco / White



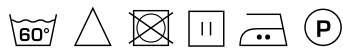
**COD. Q3K00243**

C09 Pistacchio / Pistachio



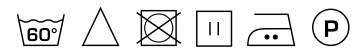
**COD. Q3K00243**

C07 Lilla chiaro / Light lilac



**COD. Q3K00243**

D24 Arancio / Orange



**COD. Q3K00243**

Z46 Fucsia / Fuchsia



**COD. Q3K00243**

U38 Bluette / Royal



# PITAGORA

## Dettagli / Details

- Pantalone unisex
- Elastico e coulisse in vita
- 2 tasche
- 1 tasca sul retro

- Unisex pants
- Elasticated waistband with drawstring
- 2 pockets
- 1 rear pocket

## Taglie / Sizes

XS ÷ 4XL Slim Fit

**COD. Q3P00245**

C01 Bianco / White

## Tessuto / Fabric

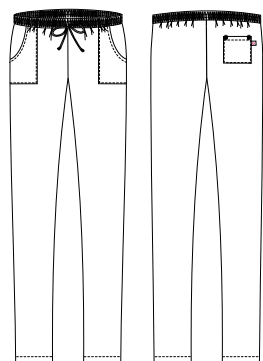
100% cotone  
100% cotton  
185 g / m<sup>2</sup>

**COD. Q3P00246**

C09 Pistacchio / Pistachio  
C07 Lilla chiaro / Light lilac  
D24 Arancio / Orange  
Z46 Fucsia / Fuchsia  
U38 Bluette / Royal

## Tessuto / Fabric

100% cotone  
100% cotton  
200 g / m<sup>2</sup>



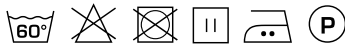
**COD. Q3P00245**

C01 Bianco / White



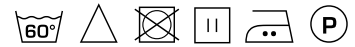
**COD. Q3P00246**

C09 Pistacchio / Pistachio



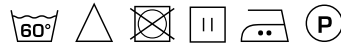
**COD. Q3P00246**

C07 Lilla chiaro / Light lilac



**COD. Q3P00246**

D24 Arancio / Orange



**COD. Q3P00246**

Z46 Fucsia / Fuchsia



**COD. Q3P00246**

U38 Bluette / Royal



**ACCESSORI COORDINABILI**  
**MATCHING ACCESSORIES**  
pag. 160

## health & wellness

Casacche

Tunics

# CARMEN

### Dettagli / Details

- Chiusura con zip rovesciata
- Taschino sul petto
- 2 tasche
- Rete nei fianchetti dietro

- *Inverted zip fastening*
- *Breast pocket*
- *2 pockets*
- *Network fabric on the back side*

### Taglie / Sizes

XS ÷ 3XL Slim Fit

**COD. Q2K00238**

C01 Bianco / White

**COD. Q2K00239**

U32 Nero / Black

### Tessuto / Fabric

100% poliestere

100% polyester

86 g / m<sup>2</sup>



DRY  
& CLEAN

Fresh &  
Stretch

ULTRA  
LIGHT  
86 GR.



Fresh &  
Stretch

ULTRA  
LIGHT  
86 GR.

**COD. Q2K00239**

U32 Nero / Black

**COD. Q2K00238**

C01 Bianco / White

# MAURIZIO

## Dettagli / Details

- Chiusura con zip rovesciata
- Taschino sul petto
- 1 taschino porta penne
- Rete nei fianchetti dietro

- Inverted zip fastening

- Breast pocket

- 1 pen pocket

- Network fabric on the back side

## Taglie / Sizes

S ÷ 4XL Slim Fit

**COD. Q2K00259**

C01 Bianco / White

**COD. Q2K00260**

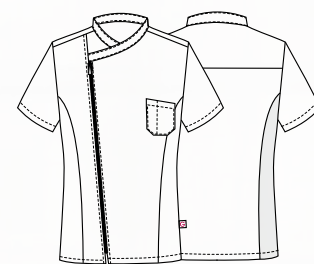
U32 Nero / Black

## Tessuto / Fabric

100% poliestere

100% polyester

86 g / m<sup>2</sup>



DRY  
& CLEAN



ULTRA  
LIGHT  
86 GR.



**COD. Q2K00259**

C01 Bianco / White



Fresh &  
Stretch

ULTRA  
LIGHT  
86 GR.



**COD. Q2K00260**

U32 Nero / Black

## health & wellness

Casacche

Tunics

# SARA

### Dettagli / Details

- Abbottonatura nascosta con automatici
- 2 tasche

- Concealed buttoning with press studs
- 2 pockets

### Taglie / Sizes

XS ÷ 3XL Slim Fit

**COD. Q2K00236**

C01 Bianco / White

**COD. Q2K00237**

U32 Nero / Black

### Tessuto / Fabric

65% poliestere 35% cotone  
65% polyester 35% cotton  
140 g / m<sup>2</sup>

**COD. Q2K00271**

C08 Azzurro chiaro / Light blue  
M19 Verde acqua / Acqua green  
C04 Salmone / Salmon

### Tessuto / Fabric

70% poliestere 30% cotone  
70% polyester 30% cotton  
132 g / m<sup>2</sup>



**COD. Q2K00237**

U32 Nero / Black



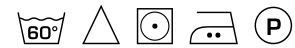
**COD. Q2K00236**

C01 Bianco / White



**COD. Q2K00237**

U32 Nero / Black



**COD. Q2K00271**

C08 Azzurro chiaro / Light blue



**COD. Q2K00271**

M19 Verde acqua / Acqua green



**COD. Q2K00271**

C04 Salmone / Salmon



## health & wellness

Casacche donna

Woman tunics

# ELEA

### Dettagli / Details

- Abbottonatura a vista con automatici
- 2 tasche
- Rete nei fianchetti dietro

- Visible buttoning with press studs
- 2 pockets
- Network fabric on the back side

### Taglie / Sizes

XS ÷ 3XL Slim Fit

**COD. Q2K00230**

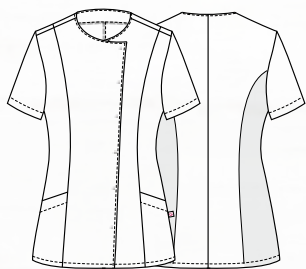
C01 Bianco / White

**COD. Q2K00231**

U32 Nero / Black

### Tessuto / Fabric

65% poliestere 35% cotone  
65% polyester 35% cotton  
140 g / m<sup>2</sup>



COMFORT



**COD. Q2K00231**

U32 Nero / Black



**COD. Q2K00230**

C01 Bianco / White

## PINES

### Dettagli / Details

- Chiusura con zip rovesciata
- 2 tasche

- Inverted zip fastening
- 2 pockets

### Taglie / Sizes

XS ÷ 3XL Slim Fit

**COD. Q2K00255**

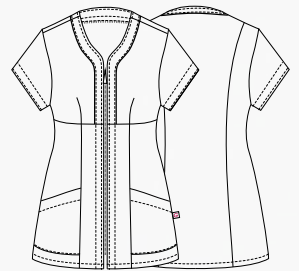
C01 Bianco / White

**COD. Q2K00256**

U32 Nero / Black

### Tessuto / Fabric

65% poliestere 35% cotone  
65% polyester 35% cotton  
140 g / m<sup>2</sup>



**COD. Q2K00255**

C01 Bianco / White



**COD. Q2K00256**

U32 Nero / Black



Casacca **PINES**

**COD. Q2K00256**

pag. 151



Kimono **ILARIA**

**COD. Q2K00257**

pag. 154

# ILARIA

## Dettagli / Details

- Chiusura regolabile con laccetto
- Spacchetti sulle maniche
- Ampia tasca centrale
- 2 spacchetti laterali

- Adjustable fastening with string
- Vents on sleeves
- Wide central pocket
- 2 side vents

## Taglie / Sizes

XS ÷ 3XL Regular Fit

**COD. Q2K00258**

U32 Nero / Black

**COD. Q2K00257**

C01 Bianco / White

## Tessuto / Fabric

65% poliestere 35% cotone  
65% polyester 35% cotton  
143 g / m<sup>2</sup>



**COD. Q2K00257**

C01 Bianco / White



**COD. Q2K00258**

U32 Nero / Black

## CAMERON

### Dettagli / Details

- Elastico e coulisse in vita
- 2 tasche - 2 tasche sul retro

- *Elasticated waistband with drawstring*
- *2 pockets - 2 rear pockets*

### Taglie / Sizes

XS ÷ 3XL Slim Fit

**COD. Q2P00240**

C01 Bianco / White

### Tessuto / Fabric

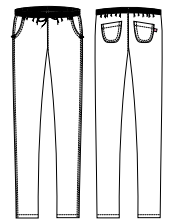
100% cotone  
100% cotton  
185 g / m<sup>2</sup>

**COD. Q2P00241**

U32 Nero / Black

### Tessuto / Fabric

65% poliestere 35% cotone  
65% polyester 35% cotton  
200 g / m<sup>2</sup>



**COD. Q2P00240**

C01 Bianco / White



**COD. Q2P00241**

U32 Nero / Black



## CLEOPATRA

### Dettagli / Details

- Elastico e coulisse in vita
- 2 tasche - 1 tasca sul retro

- *Elasticated waistband with drawstring*
- *2 pockets - 1 rear pocket*

### Taglie / Sizes

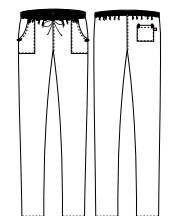
XS ÷ 3XL Slim Fit

**COD. Q3P00283**

C01 Bianco / White  
U32 Nero / Black

### Tessuto / Fabric

65% poliestere 35% cotone  
65% polyester 35% cotton  
143 g / m<sup>2</sup>



**COD. Q3P00283**

C01 Bianco / White



**COD. Q3P00283**

U32 Nero / Black





DRY  
& CLEAN

**Fresh &  
Stretch**



**COD. Q2L00219**

C01 Bianco / White



# JEFF

## Dettagli / Details

- Collo e fondo maniche a costine
- Spacchi laterali
- Ricamo manica sinistra (indossata)
- Idrorepellente
- Ribbed collar and bottom sleeves
- Side vents
- Embroidery on the left sleeve (worn)
- Waterproof

## Taglie / Sizes

S ÷ 4XL Slim Fit

**COD. Q2L00219**

Z48 Blu / Blue  
U32 Nero / Black  
C01 Bianco / White

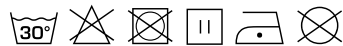
## Tessuto / Fabric

100% poliammide  
100% polyamide  
195 g / m<sup>2</sup>



**COD. Q2L00219**

Z48 Blu / Blue



**COD. Q2L00219**

U32 Nero / Black



**COD. Q2L00219**

C01 Bianco / White



# SUSAN

## Dettagli / Details

- Collo e fondo maniche a costine
- Spacchi laterali
- Ricamo manica sinistra (indossata)
- Idrorepellente

- Ribbed collar and bottom sleeves
- Side vents
- Embroidery on the left sleeve (worn)
- Waterproof

## Taglie / Sizes

XS ÷ 3XL Slim Fit

**COD. Q2L00268**

Z48 Blu / Blue  
U32 Nero / Black  
C01 Bianco / White

## Tessuto / Fabric

100% poliammide  
100% polyamide  
195 g / m<sup>2</sup>



**COD. Q2L00268**

Z48 Blu / Blue



**COD. Q2L00268**

U32 Nero / Black



**COD. Q2L00268**

C01 Bianco / White





DRY  
& CLEAN

Fresh &  
Stretch



**COD. Q2L00268**

U32 Nero / Black

# BANDANA MERCURIO

Taglie / Sizes

Taglia unica / One size

**COD. Q5100264**

C09 Pistacchio / Pistachio  
U38 Bluette / Royal  
C07 Lilla chiaro / Light lilac  
D24 Arancio / Orange  
Z46 Fucsia / Fuchsia

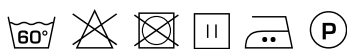
Tessuto / Fabric

100% cotone  
100% cotton  
200 g / m<sup>2</sup>



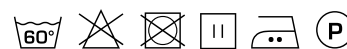
**COD. Q5100264**

C09 Pistacchio  
Pistachio



**COD. Q5100264**

U38 Bluette  
Royal



**COD. Q5100264**

C07 Lilla chiaro  
Light lilac



**COD. Q5100264**

D24 Arancio  
Orange



**COD. Q5100264**

Z46 Fucsia  
Fuchsia





**TESSUTO ESCLUSIVO CHE COMBINA LA MICROFIBRA CON IL FINISSAGGIO CLEAN FINISH**  
**EXCLUSIVE FABRIC THAT COMBINES THE MICROFIBRE WITH THE CLEAN FINISH TREATMENT**

I capi **DRY&CLEAN** sono realizzati in microfibra, con speciale trattamento **CLEAN FINISH**, privo di fluoro, PFOA, PFOS, PFHXA, APEO, la migliore soluzione in termini di ambiente e sicurezza.

**DRY&CLEAN** garments are made of Microfibre with the special **CLEAN FINISH** treatment, free of fluorine, PFOA, PFOS, PFHXA and APEO – the best solution in terms of environment and safety.

Idrorepellente,  
migliore repellenza  
ad altri liquidi

Traspirante e leggero,  
solo 86 gr per  
un'asciugatura rapida

Colori brillanti,  
che non sbiadiscono

Resistente  
alle abrasioni  
ed agli strappi

Morbido,  
piacevole  
da indossare



*Waterproof,  
better repellence  
to other liquids*



*Breathable and light  
(only 86 g)  
for a quick drying*



*Brilliant colors  
that do not fade*



*Resistant  
to scraping  
and tearing*



*Soft and  
comfortable*

**DRY&CLEAN** è la nuova proposta GIBLOR's che unisce la microfibra con il finissaggio **CLEAN FINISH**. Il tessuto è leggero, solo 86 gr, dalla superficie liscia, garantisce un'asciugatura rapida e un effetto impeccabile. Grazie alla morbida mano pesca della microfibra, i capi risultano piacevoli da indossare anche a contatto diretto con la pelle, assicurando il massimo comfort durante la giornata lavorativa.

Il finissaggio **CLEAN FINISH**, invece, assicura l'idrorepellenza dei capi e una maggiore repellenza agli altri liquidi. L'efficacia di questo finissaggio, che non utilizza sostanze nocive per l'ambiente e la salute, rende i capi resistenti alle macchie e ai segni del tempo. Anche i colori brillanti rimangono inalterati nel tempo, senza perdere la loro intensità.

Sono poi la traspirabilità del tessuto e la sua resistenza ai lavaggi che fanno di questo nuovo tessuto GIBLOR's la soluzione ideale in termini di qualità e affidabilità.

Con questa nuova soluzione GIBLOR's ribadisce il proprio impegno verso l'innovazione e la tutela della salute dei propri clienti e della natura, arricchendo la collezione di abbigliamento professionale con capi di abbigliamento che coniugano comfort, durabilità e design di qualità superiore.

**DRY&CLEAN** is the new GIBLOR's proposal that combines microfibre with the **CLEAN FINISH** treatment. The fabric is light, only 86 g, and with a smooth surface, it guarantees quick drying and an impeccable effect. Thanks to the soft touch of the microfibre, the garments are pleasant to wear and they drape on the body perfectly, ensuring maximum comfort during the working day.

The **CLEAN FINISH** treatment, moreover, ensures the waterproof features of the garments and greater repellence to other liquids, such as oils and greasy solutions. The effectiveness of this finishing, which does not use substances harmful to the environment and health, makes the garments resistant to stains and the signs of aging. Even the bright colours remain unchanged over time, without losing their intensity.

Furthermore, it is the breathability of the fabric and its resistance to washing that make this new GIBLOR's fabric the ideal solution in terms of quality and reliability. With this new solution, GIBLOR's reiterates its commitment to innovation and the protection of the health of its customers and nature, enriching the professional clothing collection with garments that combines comfort, durability and superior quality design.





Frutto della continua ricerca e della grande maestria del team dell'ufficio stile **Giblor's**, i nuovi capi **Fresh & Stretch**, realizzati abbinando i nostri tessuti più performanti al tessuto in maglia di Piquet, o completamente **Fresh & Stretch**, rappresentano una svolta in termini di traspirabilità, comfort e design. Chi trascorre molte ore in movimento indossando una divisa, sa bene quanto sia importante lasciare la pelle a contatto con l'aria, senza rinunciare alla protezione del tessuto.

Da questa esigenza nasce l'idea di creare dei capi che abbiano una sempre maggiore componente di tessuto in maglia di Piquet, passando dai piccoli inserti utilizzati finora in posizioni strategiche ad intere porzioni della divisa, come la totalità della parte posteriore o addirittura l'intero capo.

Un'idea non semplice da tradurre in realtà, perché è essenziale che il comfort e la vestibilità mantengano un livello di eccellenza. Questo significa tagli studiati al millimetro e cuciture rifinite con precisione, design perfetto e un fit fluido per ogni singola tipologia di divisa. Nei nuovi capi **Fresh & Stretch** troverete tutto questo, in puro stile **Giblor's**.

---

*The result of the continuous research and great skill of the **Giblor's** style office team, the new garments **Fresh & Stretch**, made by combining our best performing fabrics with Piqué fabric, or completely **Fresh & Stretch**, represent a turning point in terms of comfort, breathability and design. Anyone who spends many hours on the move wearing a uniform knows how important it is to leave the skin in contact with the air, without sacrificing the protection of the fabric.*

*From this need, the idea of creating garments that have an ever greater component of Piqué fabric arises, passing from the small inserts used so far in strategic positions to entire portions of the uniform, such as the entire back or even the entire garment.*

*An idea that is not easy to translate into reality, because it is essential that comfort and wearability maintain a level of excellence. This means cuts studied to the millimeter and stitching finished with precision, perfect design and a fluid fit for every single type of uniform. In the new **Fresh & Stretch** garments you will find all this, in pure **Giblor's** style.*





## Lavaggio ad acqua / Water washing

La vaschetta è il simbolo grafico usato per le informazioni relative al lavaggio in acqua.  
The basin is the symbol used for information relating to water washing.

 <p>Lavaggio delicato Gentle wash</p>	 <p>Lavaggio 30° / 40° / 60° / 95°. Wash 30° / 40° / 60° / 95°.</p>	 <p>Lavaggio a mano con temperatura massima di 40°. Il capo non deve essere strizzato. The garment must be hand-washed, the temperature must not exceed 40°C. The garment must not be wrung.</p>	 <p>Non lavare. Do not wash.</p>
--	--	---	---



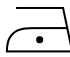


## Candeggio / Bleaching

Il triangolo è il simbolo del candeggio al cloro.  
The triangle is the chlorine bleaching symbol.

 <p>È permesso l'uso di qualsiasi candeggiante diluito al 3%. It is allowed the use of any bleach diluted to 3%.</p>	 <p>Non candeggiare. Do not bleach.</p>
---	--

## Stiratura / Ironing

Il ferro da stiro è il simbolo relativo alle informazioni sulla stiratura. La temperatura ideale per ogni capo è indicata da punti neri riportati sul ferro.  
The iron is the symbol used for information relating to ironing. The black dots indicate the suitable temperature.

 <p>Stiro temperatura massima 200° Max ironing temperature 200°</p>	 <p>Stiro temperatura massima 150° Max ironing temperature 150°</p>	 <p>Stiro temperatura massima 110° Max ironing temperature 110°</p>	 <p>Non stirare. Do not iron.</p>	 <p>Non stirare a vapore. Do not steam iron.</p>
--	--	--	--	---

## Lavaggio a secco / Dry cleaning

Il cerchio è il simbolo grafico relativo al lavaggio a secco e i segni riportati all'interno indicano il tipo di solvente adatto al tessuto.  
The circle is the dry-cleaning symbol and the signs on the inside indicate the suitable solvent-type.

 <p>Lavare a secco con qualsiasi solvente. Dry clean using any solvent.</p>	 <p>Lavaggio delicato a secco con qualsiasi solvente. Gentle dry clean using any solvent.</p>	 <p>Non lavare a secco. Do not dry clean.</p>
--	--	--

## Asciugatura / Drying

I simboli dell'asciugatura sono rappresentati da un quadrato.  
The drying symbols are represented by a square.

 <p>Asciugare a tamburo a bassa temperatura. Tumble dry low temperature.</p>	 <p>Non asciugare a tamburo. Do not tumble dry.</p>	 <p>Asciugatura verticale senza spremitura. Vertical drying without squeezing.</p>
---	--	---

## CONSIGLI TECNICI / TECHNICAL ADVICE

Per una buona durata dei capi sono consigliabili i seguenti accorgimenti.  
For a well wearing of the clothes please read the following suggestions.

<b>1</b>	Lavare i capi a rovescio.	<i>Wash the clothes inside out.</i>
<b>2</b>	Lavare i capi in acqua tiepida per almeno due volte prima di procedere con modifiche sartoriali.	<i>Wash the clothes in lukewarm water at least for two times proceeding with sartorial changes.</i>
<b>3</b>	Non lasciare i capi in ammollo.	<i>Never leave to soak.</i>
<b>4</b>	Non è consigliabile usare prodotti chimici e in caso di necessità usare una modica quantità di candeggina (proporzione massima del 3%) solo su tessuti tinti in filo o color bianco. Le ditte Rossini e Giblor's si esonerano da responsabilità per scolorimenti o usure dei tessuti, causati dall'uso improprio di eventuali prodotti chimici.	<i>If necessary, use a little quantity of bleach (maximum proportion of 3%) only for white and yarn dyed fabrics. Rossini and Giblor's are not responsible for the fading or wear of the fabrics, due to an inappropriate use of chemical product.</i>
<b>5</b>	Per gli stampati non strofinare né spazzolare.	<i>For printed clothes do not rub and do not brush.</i>
<b>6</b>	Il puro cotone prevede un ritiro del 3% massimo.	<i>Pure cotton will have a shrinkage of max 3%.</i>
<b>7</b>	Per lo stiro attenersi alle basse temperature per i tessuti misti e sintetici; per il cotone, invece potranno essere usate temperature più elevate.	<i>How to iron: for the mixed and synthetic clothes use low temperature; for the cotton you can use higher temperature.</i>
<b>8</b>	Mai procedere a smacchiature locali, pena il deterioramento dei tessuti.	<i>In order to avoid the deterioration of the fabrics, don't remove stains locally.</i>
<b>9</b>	I capi muniti di chiusura lampo vanno allacciati completamente prima del lavaggio in lavatrice per evitare che questa si deformi.	<i>Zip up all the clothes before washing them in the washing machine in order to avoid fastening deformation.</i>
<b>10</b>	Non porre mai a contatto la chiusura lampo con fonti di calore.	<i>Never place the zip in contact with heat sources.</i>

- A** **ADRIANO** pag. 26  
**ALAN** pag. 35 - 136  
**ALICE** pag. 131 - 134 - 135  
**ALTEA** pag. 118 - 119  
**ANCONA** pag. 39  
**ANDY** pag. 41  
**ATENE** pag. 35  
**AUGUSTIN** pag. 10  
**AURORA** pag. 105 - 108
- B** **BANDANA GIOVE** pag. 42  
**BANDANA MARTE** pag. 42 - 43  
**BANDANA MERCURIO** pag. 160  
**BARI** pag. 39 - 78 - 79  
**BRUCE** pag. 34
- C** **CALIFORNIA** pag. 60  
**CAMELIA** pag. 116 - 117  
**CAMERON** pag. 155  
**CAPPELLO SCUOLA** pag. 40  
**CAPRI** pag. 80 - 81  
**CARMEN** pag. 146  
**CELINE** pag. 11  
**CLEOPATRA** pag. 155  
**COPPOLA** pag. 97  
**COPRICAPO** pag. 41  
**CRAVATTA DONNA** pag. 96  
**CRAVATTA UOMO** pag. 96
- D** **DANA** pag. 99 - 100 - 101  
**DOUGLAS** pag. 59 - 70 - 71
- E** **ELEA** pag. 150  
**ELIO** pag. 98 - 102 - 103  
**ENRICO** pag. 30 - 31
- F** **FARA** pag. 108
- G** **GABRIELE** pag. 130 - 132 - 133  
**GARY** pag. 140 - 141  
**GIOIA** pag. 86 - 87  
**GIOVANNI** pag. 102 - 103  
**GIOVE** pag. 34  
**GIUNONE** pag. 38  
**GUIDO** pag. 22 - 23
- I** **ILARIA** pag. 153 - 154  
**ISOTTA** pag. 129  
**IVAN** pag. 29
- J** **JASON** pag. 142 - 143  
**JEFF** pag. 156 - 157  
**JERRY** pag. 92 - 93
- K** **KANSAS** pag. 61  
**KARPATOS** pag. 64 - 65  
**KLIMIT** pag. 40
- L** **LANZAROTE** pag. 44  
**LATINA** pag. 84 - 85  
**LAYLA** pag. 100 - 101  
**LEVANTE** pag. 68 - 69  
**LIONE** pag. 46 - 51  
**LIPARI** pag. 82 - 83  
**LONDON** pag. 37  
**LUNA** pag. 58 - 63
- M** **MAGNOLIA** pag. 115  
**MANCHESTER** pag. 58  
**MATERA** pag. 39 - 76 - 77  
**MATTEO** pag. 107  
**MAURIZIO** pag. 147  
**MIGUEL** pag. 106  
**MIKE** pag. 128  
**MILENA** pag. 138 - 139  
**MILLY** pag. 128  
**MIMOSA** pag. 115  
**MINORCA** pag. 44  
**MONET** pag. 40  
**MYKONOS** pag. 66 - 67
- N** **NAPOLI** pag. 50 - 53  
**NIZZA** pag. 62  
**NOAH** pag. 32 - 33  
**NOVAK** pag. 110
- O** **OMAR** pag. 24 - 25  
**ORTENSIA** pag. 112 - 113
- P** **PANAREA** pag. 94 - 95  
**PAPILLON** pag. 96  
**PARIGI** pag. 36 - 37  
**PATRIZIO** pag. 12 - 13 - 16  
**PIERO** pag. 137  
**PINES** pag. 151 - 152  
**PITAGORA** pag. 144 - 145  
**PLUTONE** pag. 28  
**POSITANO** pag. 88 - 89  
**PRIMULA** pag. 120 - 121  
**PRINCE** pag. 109  
**PUB** pag. 90 - 91
- R** **RAUL** pag. 18 - 19  
**RENO** pag. 48 - 54  
**RICKY** pag. 122 - 123  
**RODANO** pag. 52 - 53  
**ROSITA** pag. 104 - 105
- S** **SARA** pag. 148 - 149  
**SCOTLAND** pag. 46 - 49  
**SENNA** pag. 52 - 55  
**SHANNON** pag. 59  
**STELVIO** pag. 44  
**SUSAN** pag. 158 - 159  
**SUSI** pag. 14 - 15 - 17
- T** **THIAGO** pag. 20 - 21  
**TOMMASO** pag. 27  
**TOMMY** pag. 97  
**TOQUE** pag. 40  
**TORCIONE** pag. 41  
**TRISTANO** pag. 129  
**TROPEZ** pag. 56 - 57
- V** **VENUS** pag. 111  
**VIOLA** pag. 114  
**VIRGINIA** pag. 72 - 73
- Z** **ZAGABRIA** pag. 36 - 37  
**ZANTE** pag. 74 - 75  
**ZEFIRO** pag. 124 - 125  
**ZOCCOLO** pag. 45  
**ZOCCOLO CON LACCETTO** pag. 45

